

## Gallery session: Draw

*A gallery based session led by designer Sara Melin*



Spouted jug, 1180-1220 (made) © Victoria and Albert Museum, London  
Teapot and lid, ca. 1650-1700, © Victoria and Albert Museum, London  
Ewer, ca. 2500 BC (made) © Victoria and Albert Museum, London

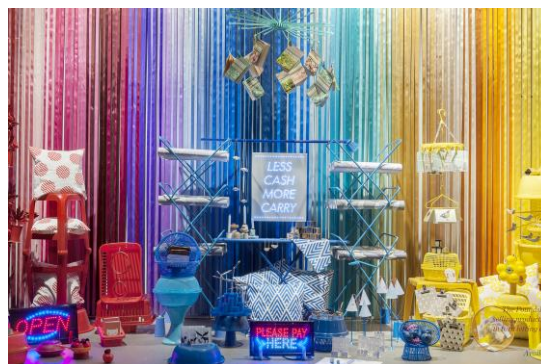
## Summary:

This experimental gallery session lasts 90 minutes and is led by designer Sara Melin. Students will be shown a range of unconventional drawing techniques which will help students to creatively investigate objects in the Ceramics gallery.

Techniques will range from drawing with wire, drawing with tape and drawing with paper in a range of scales and working both independently and collaboratively. These sessions are designed to help students maximise their gallery visit and can also be used back in the classroom.

### Information about the Designer:

Originally from Sweden, Sara moved to England in 2002 to study art and design. She graduated from Central Saint Martins in 2006 with a BA (hons) in illustration, and then went on to Royal College of Art for an MA in Communication Art and Design. Upon completion, Sara formed the art project 'The Poundshop' together with George Wu and Sarah Gottlieb. Together they have showcased in Tokyo Loft, Selfridges & the Science Museum. In 2013 The Poundshop was named as one of Selfridges Bright Young Things and also awarded as one of the top five creative entrepreneurs on the Hospital Club 100 list.



© The Poundshop

When not organising The Poundshop, Sara works as a design tutor teaching layout and art direction. She also takes The Poundshop's own brief to art universities around London, setting the students the challenge to create a product for £1 and introducing them to working within the creative industry.

### Galleries visited:

Ceramics galleries, rooms 144 & 145, level 6

### National Curriculum Links:

Art & Design

- Students will learn a range of techniques to explore their ideas
- Students will utilise a range of media

Design & Technology:

- Students will develop and communicate their ideas through 3D models
- Students will learn about and use specialist techniques and processes

### Arts Award Links:

Bronze Award

Unit 1: Part A, Part B & Part C (Some follow up work required)

Silver Award

Unit 1: Part C & D (Some follow up work required)

### Follow up activities:

Use the techniques learnt in the session to explore other galleries or collections in the Museum. Experiment further when you get back to school by changing the scale, materials and surfaces you are working with.