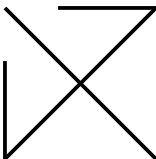
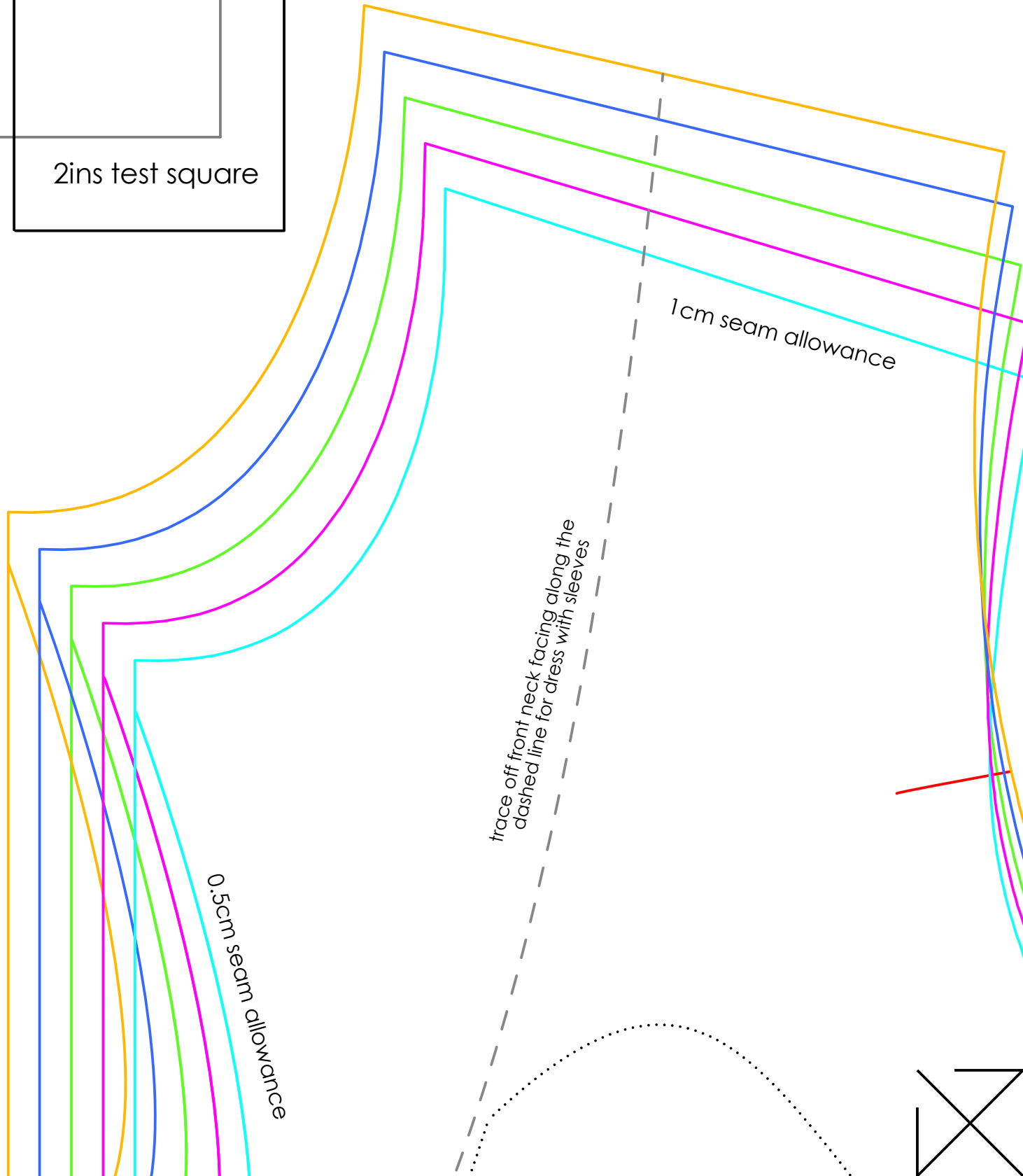
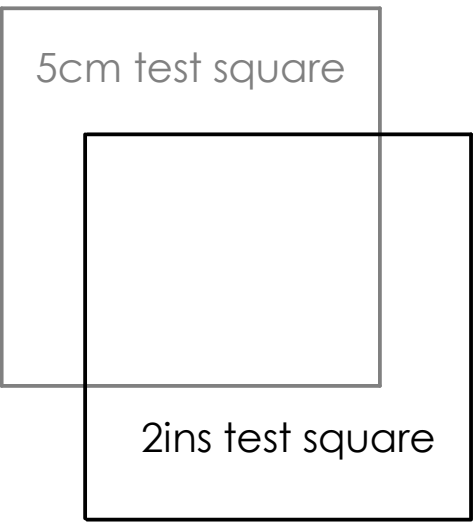
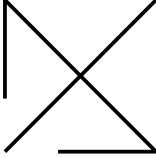
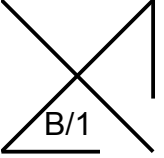
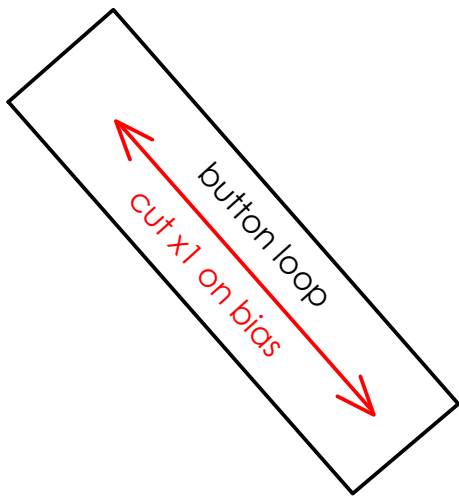
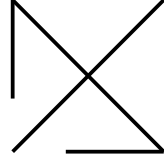


A/1





B/1

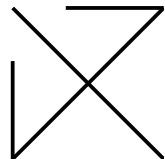
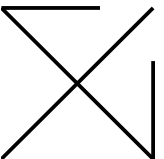


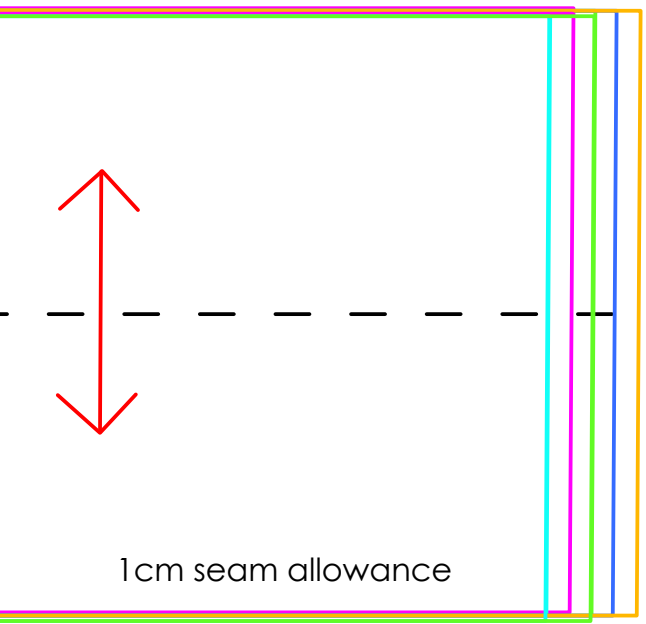
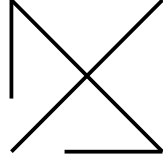
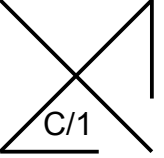
MARY QUANT-STYLE MINIDRESS

CUFF

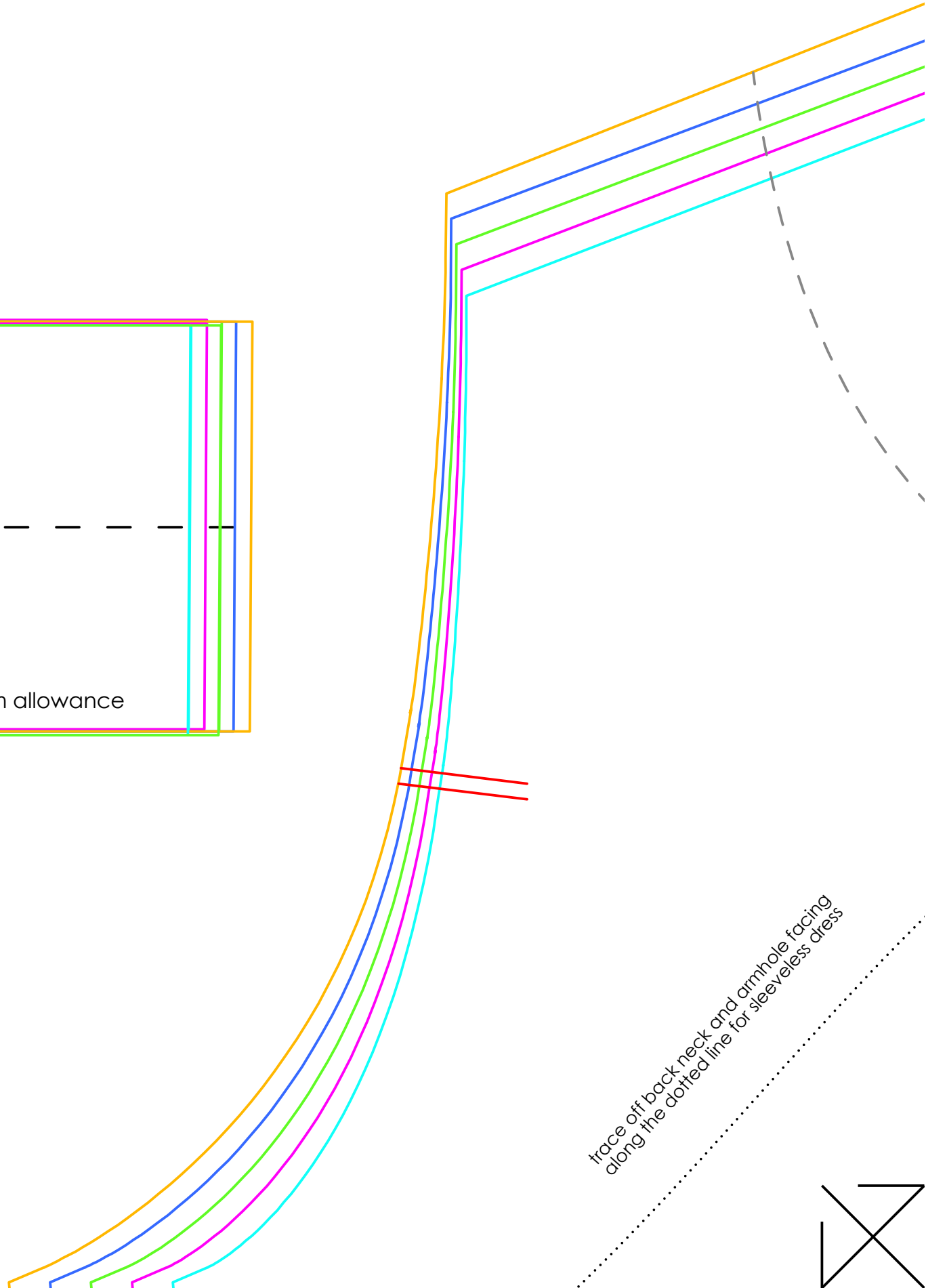
cut x1 pair

www.vam.ac.uk/articles/sew-your-own-mary-quant-style-minidress
This pattern is for personal non-commercial use only

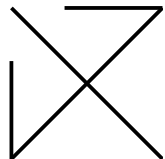
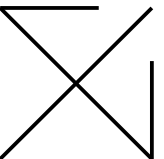


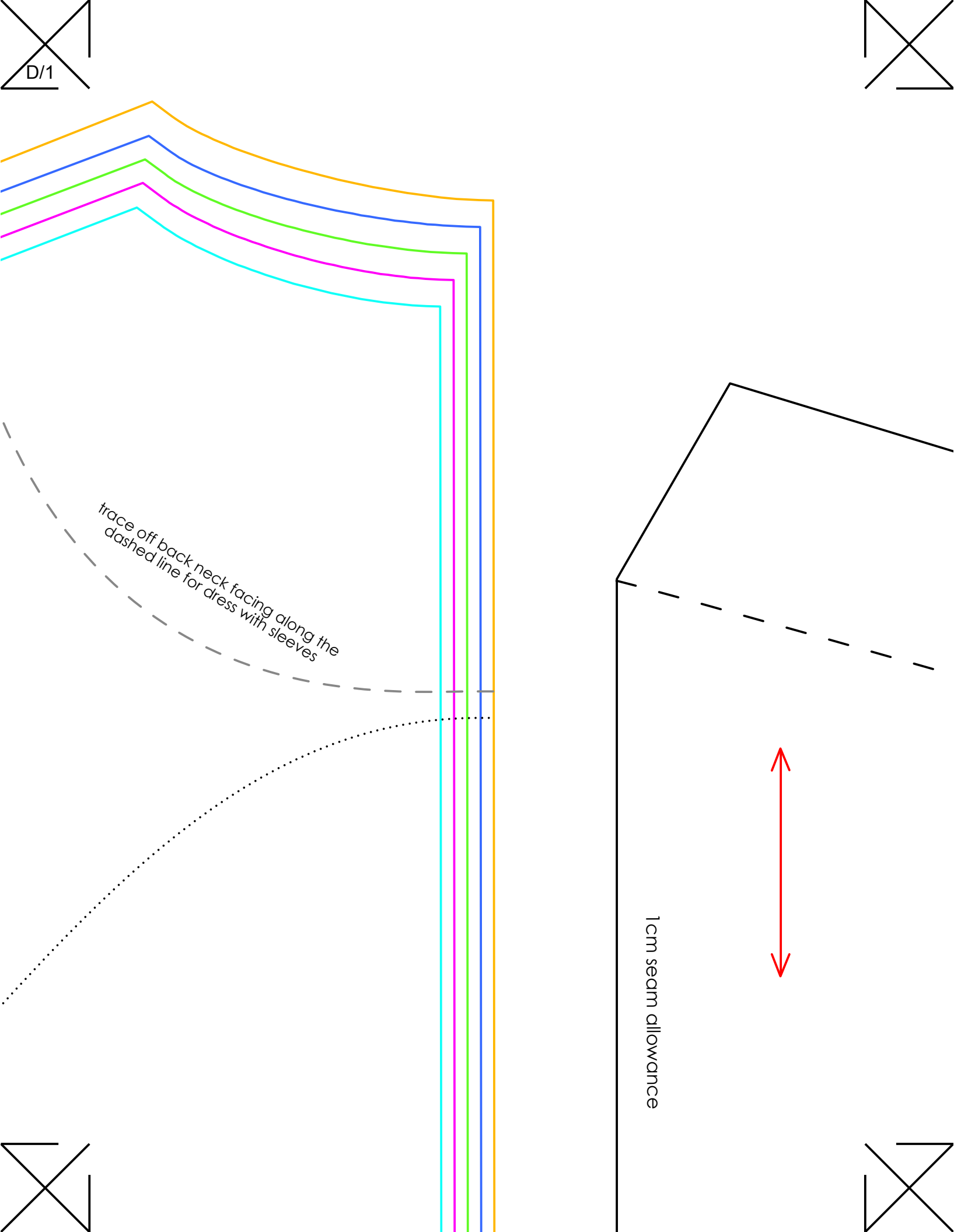


1 cm seam allowance



trace off back neck and armhole facing
along the dotted line for sleeveless dress

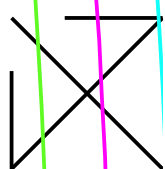
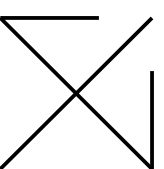
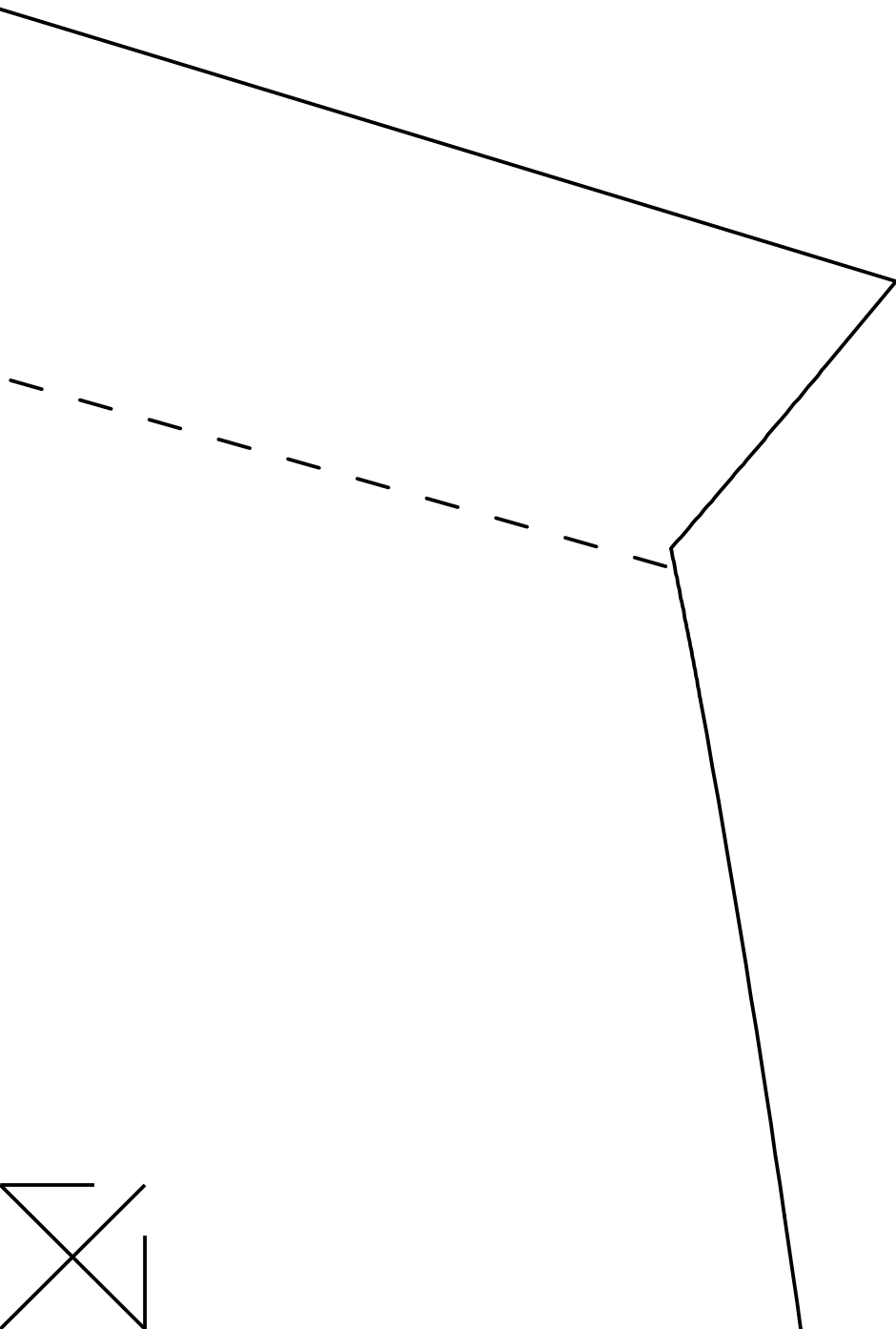
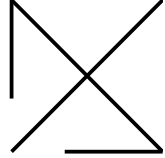
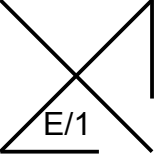


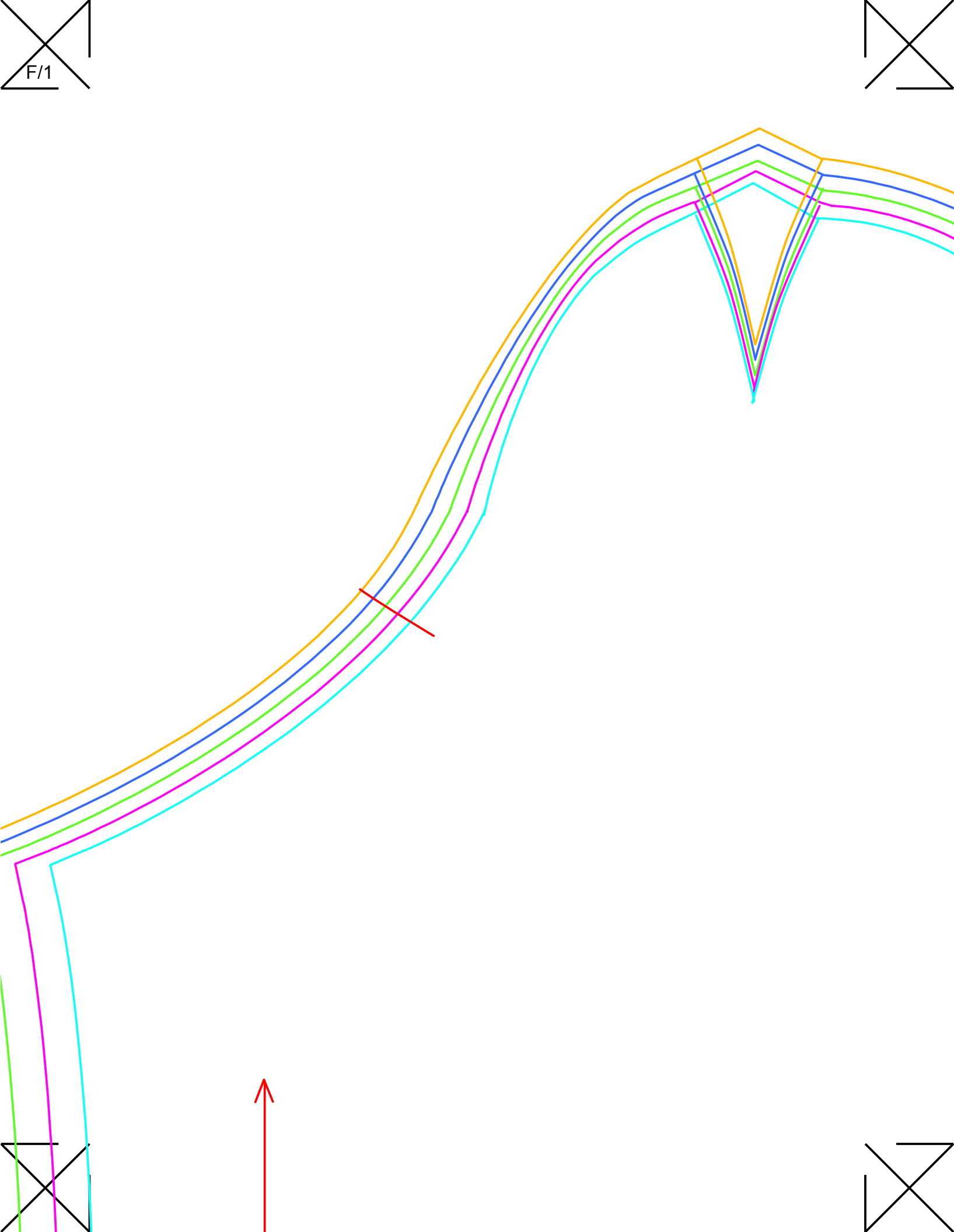


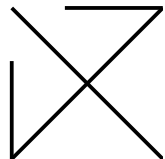
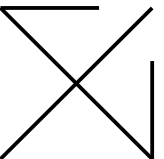
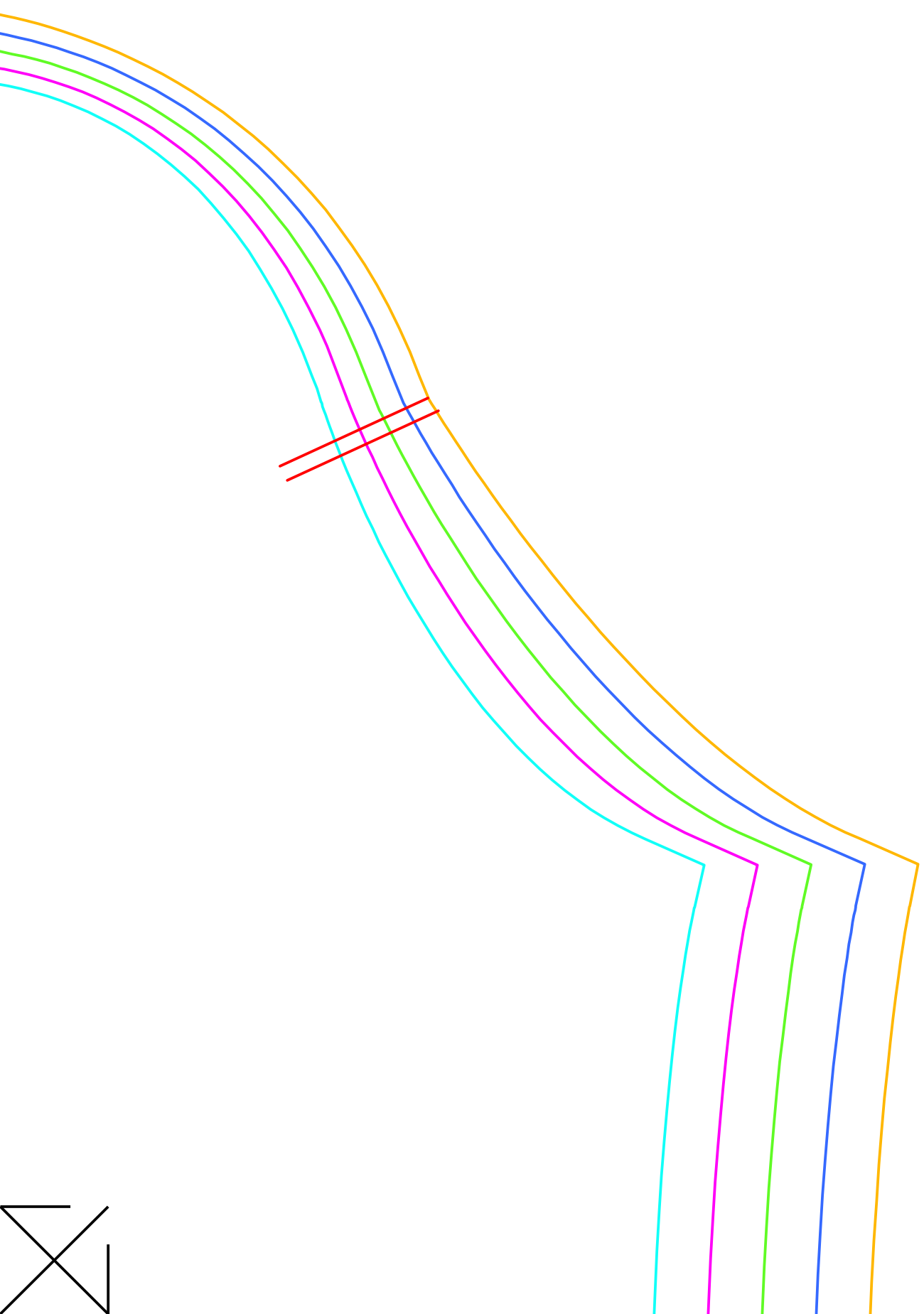
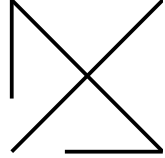
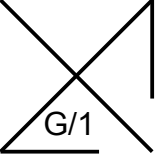
D/1

trace off back neck facing along the dashed line for dress with sleeves

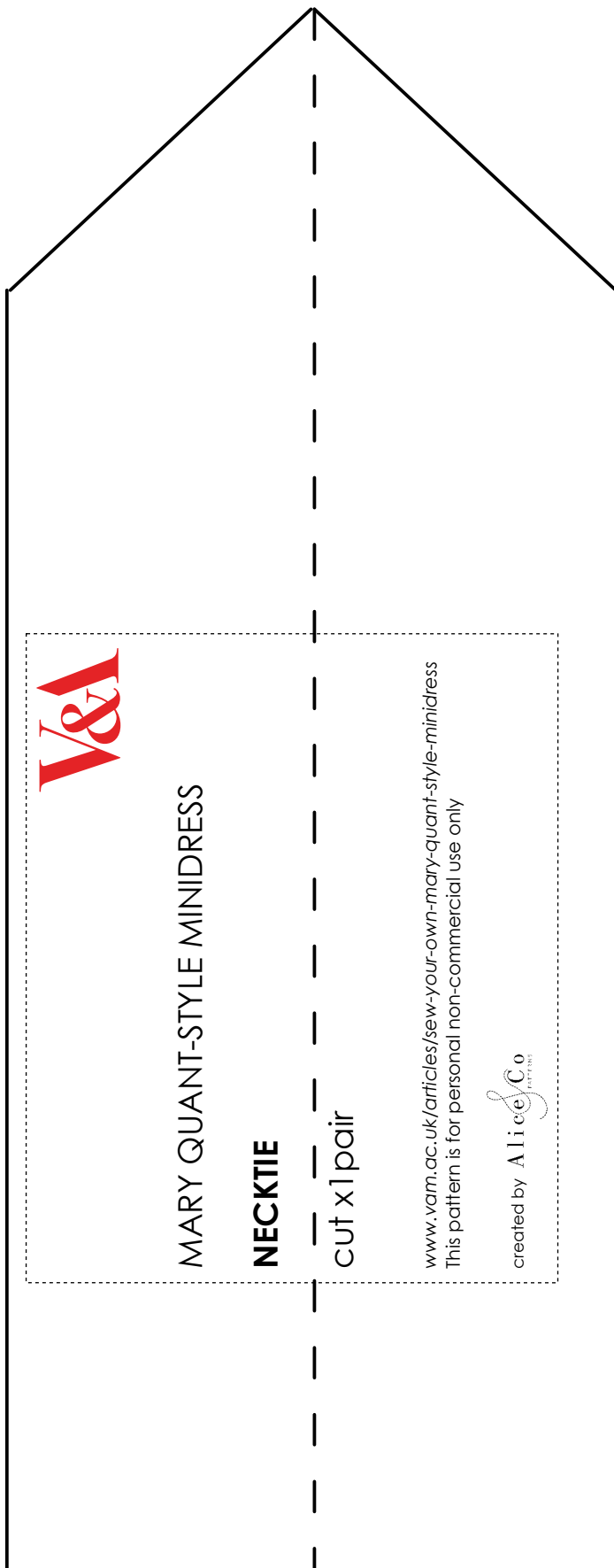
1cm seam allowance







H/1



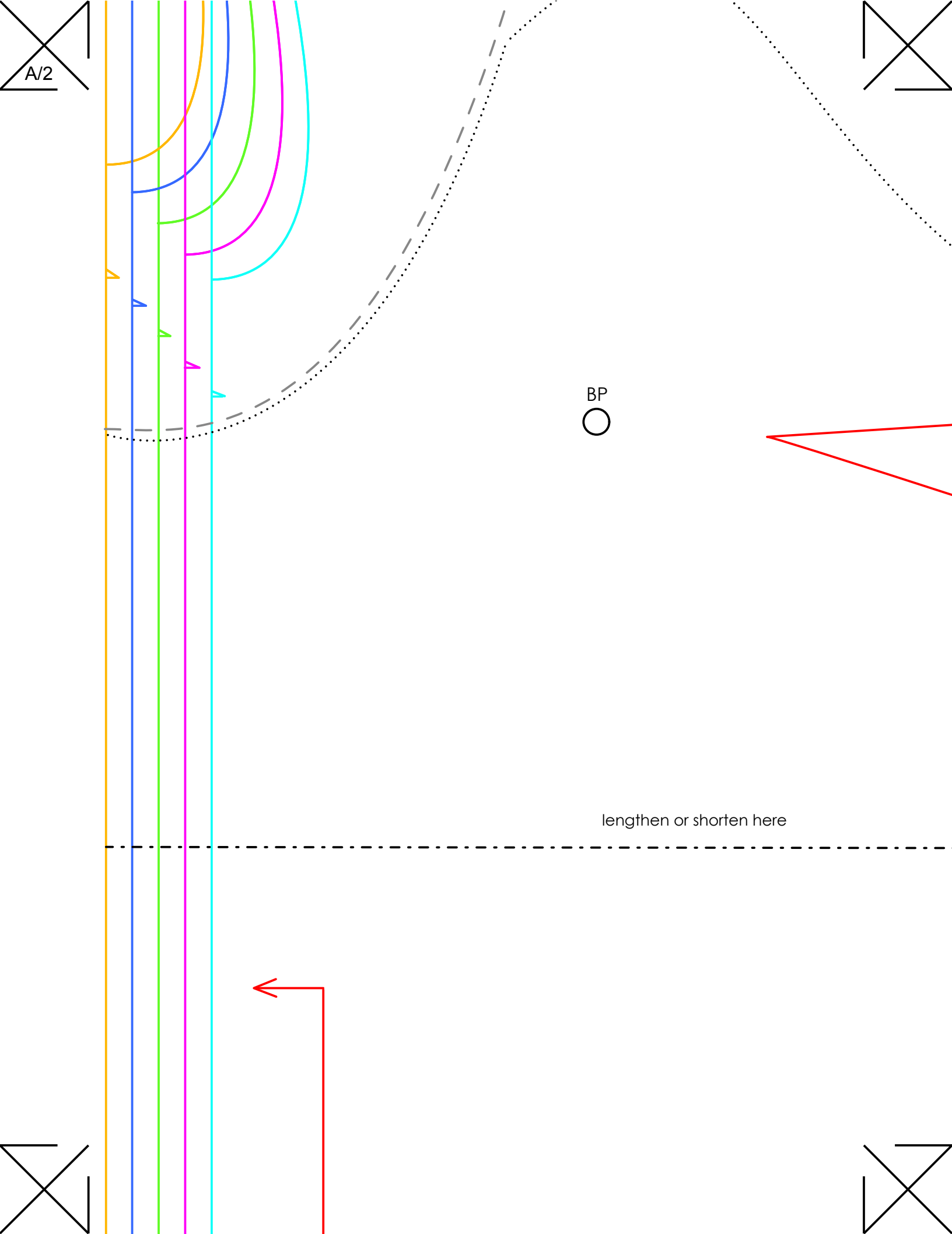
MARY QUANT-STYLE MINIDRESS

NECKTIE

cut x1pair

www.vam.ac.uk/articles/sew-your-own-mary-quant-style-minidress
This pattern is for personal non-commercial use only

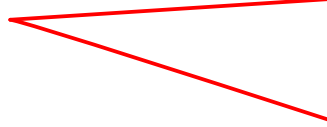
created by *Alice Co*
© 2017

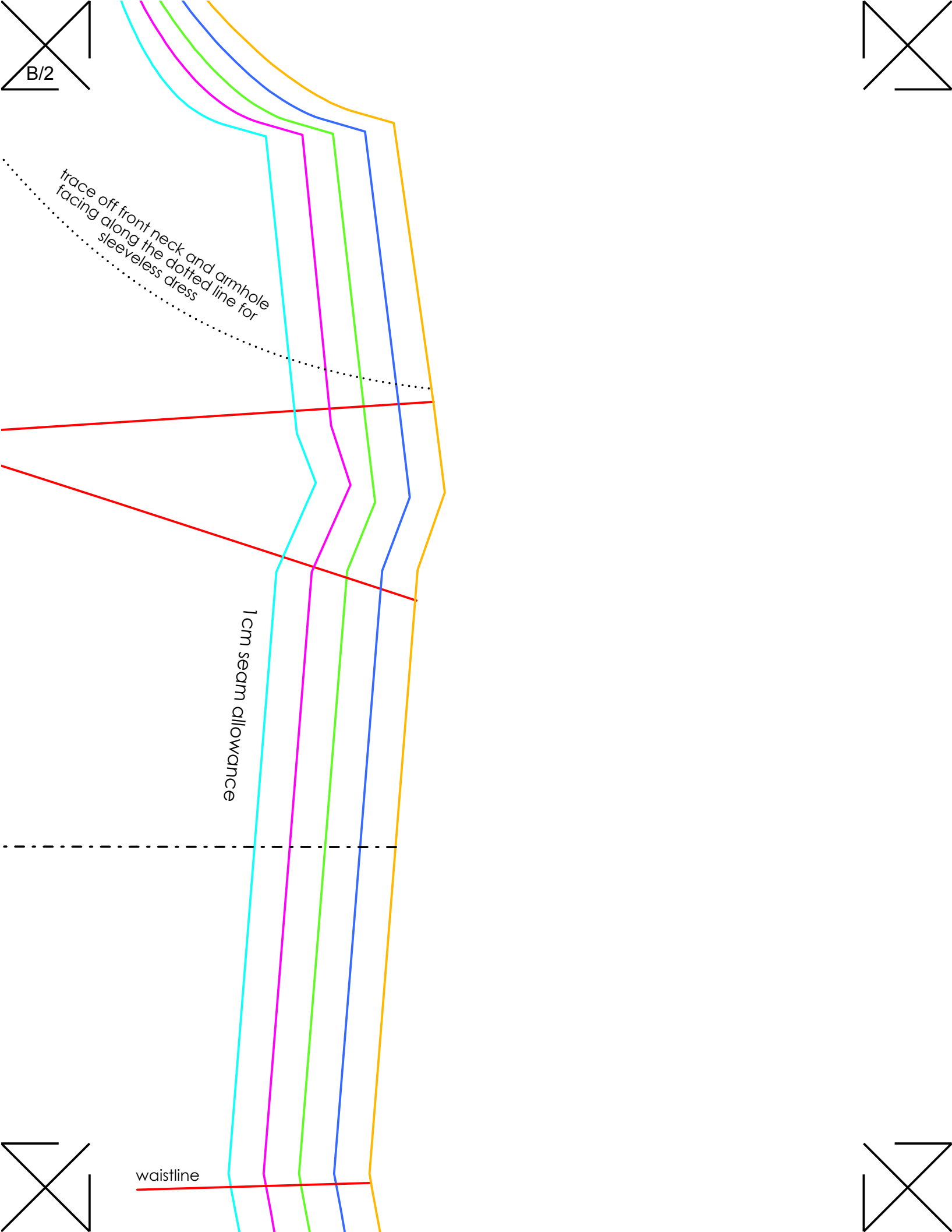


A/2

BP

lengthen or shorten here



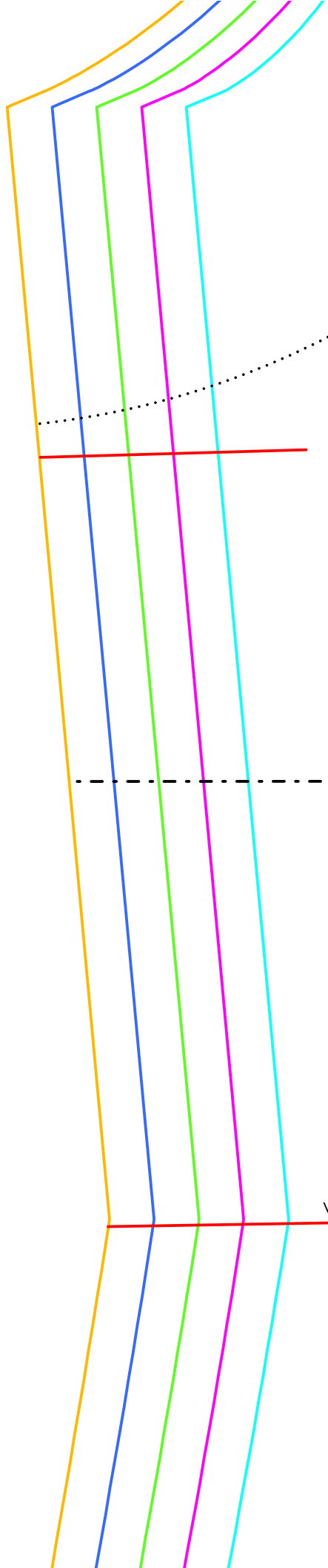
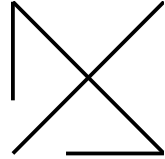
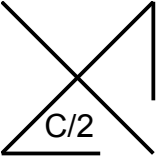


B/2

trace off front neck and armhole facing along the dotted line for sleeveless dress

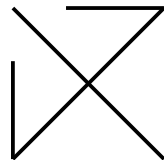
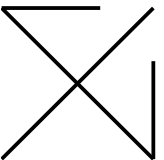
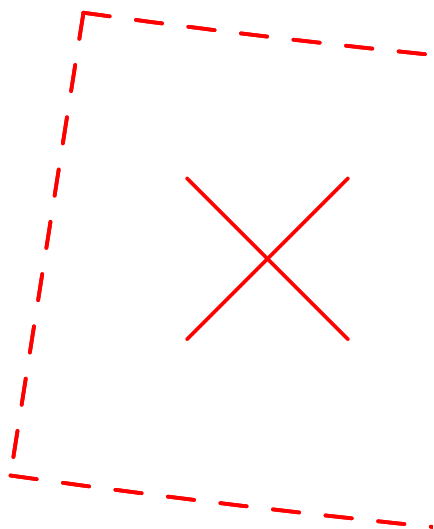
1cm seam allowance

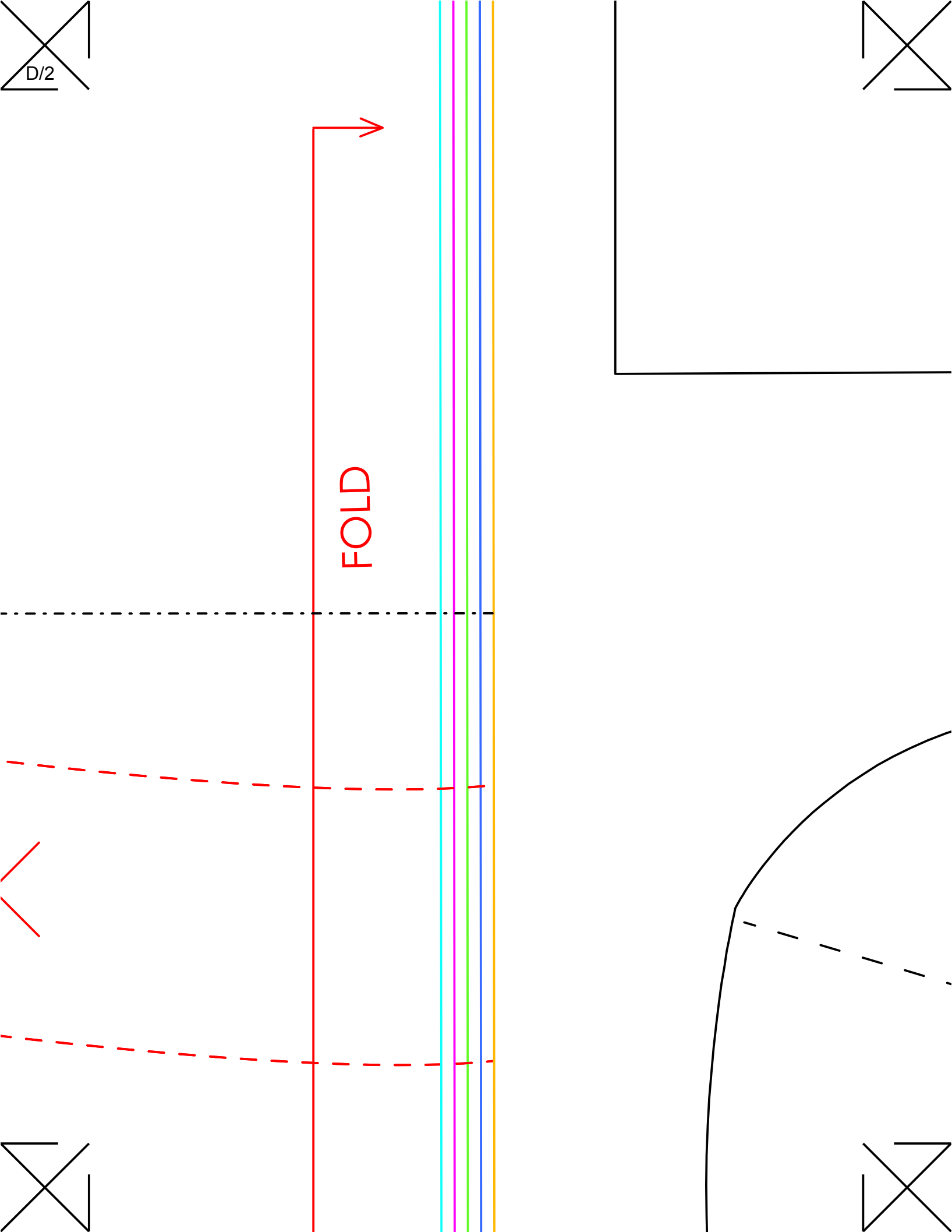
waistline

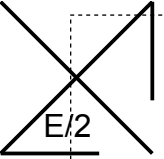


lengthen or shorten here

waistline







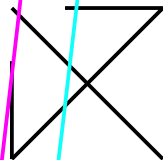
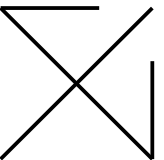
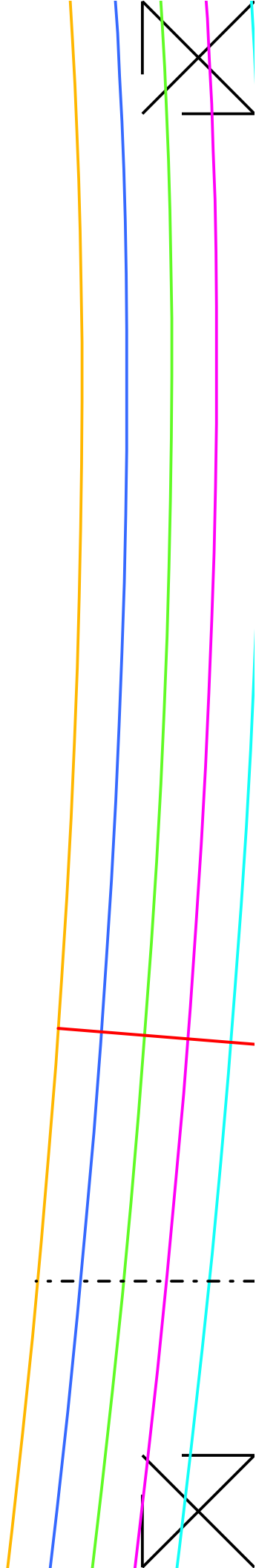
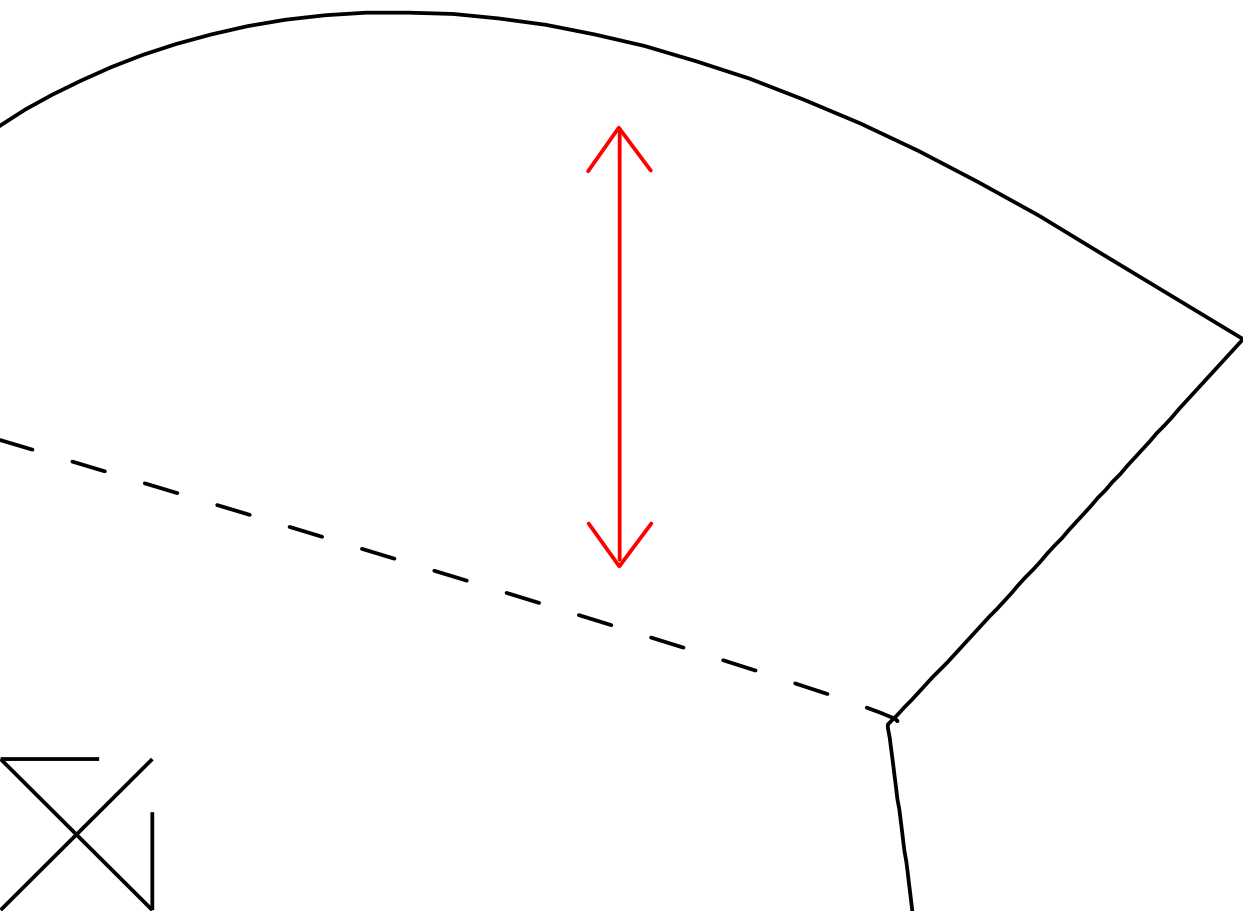
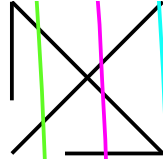
V&A

MARY QUANT-STYLE MINIDRESS

ANGLED POCKET

cut x1 pair

www.vam.ac.uk/articles/sew-your-own-mary-quant-style-minidress
This pattern is for personal non-commercial use only





STRAIGHT GRAIN



MARY QUANT-STYLE MINIDRESS

SLEEVE

cut x1 pair

www.vam.ac.uk/articles/sew-your-own-mary-quant-style-minidress
This pattern is for personal non-commercial use only

colour key for UK sizes

size 6 - turquoise

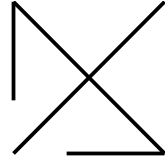
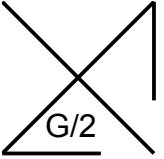
size 8 - pink

size 10 - lime

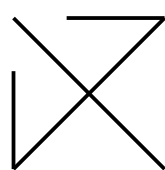
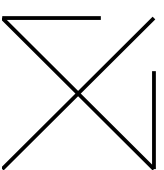
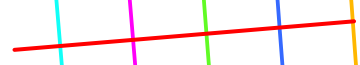
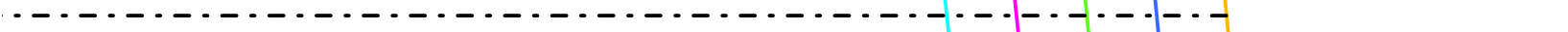
size 12 - blue

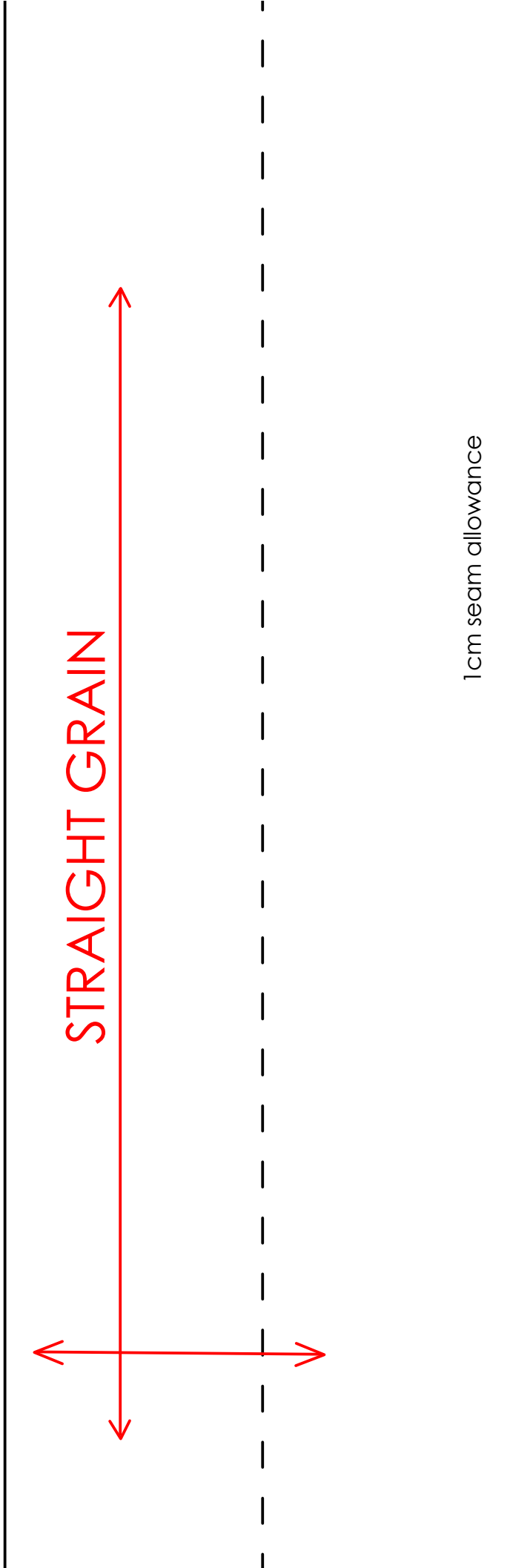
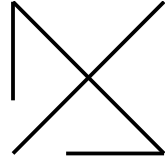
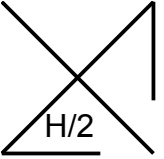
size 14 - orange

lengthen or shorten here



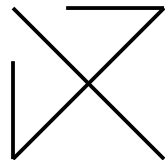
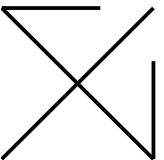
1 cm seam allowance

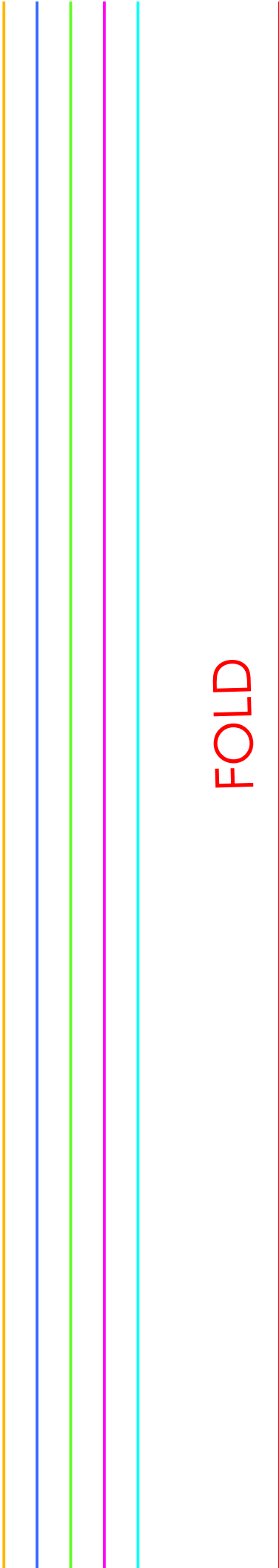
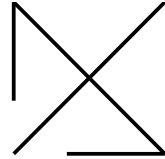
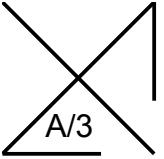




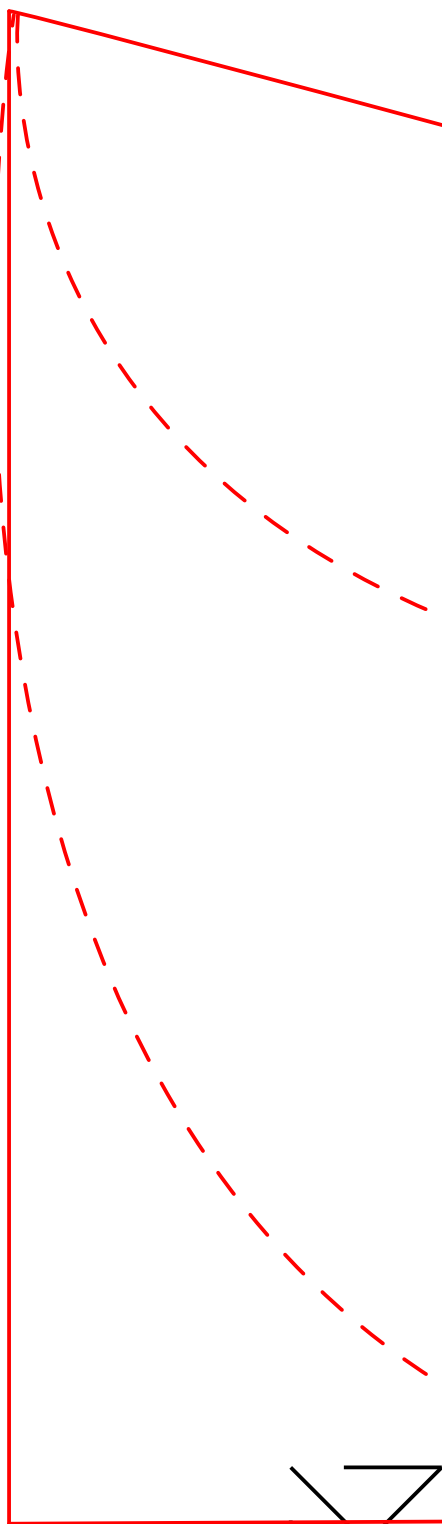
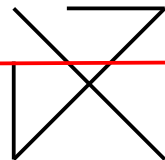
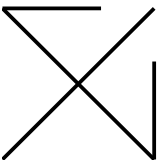
STRAIGHT GRAIN

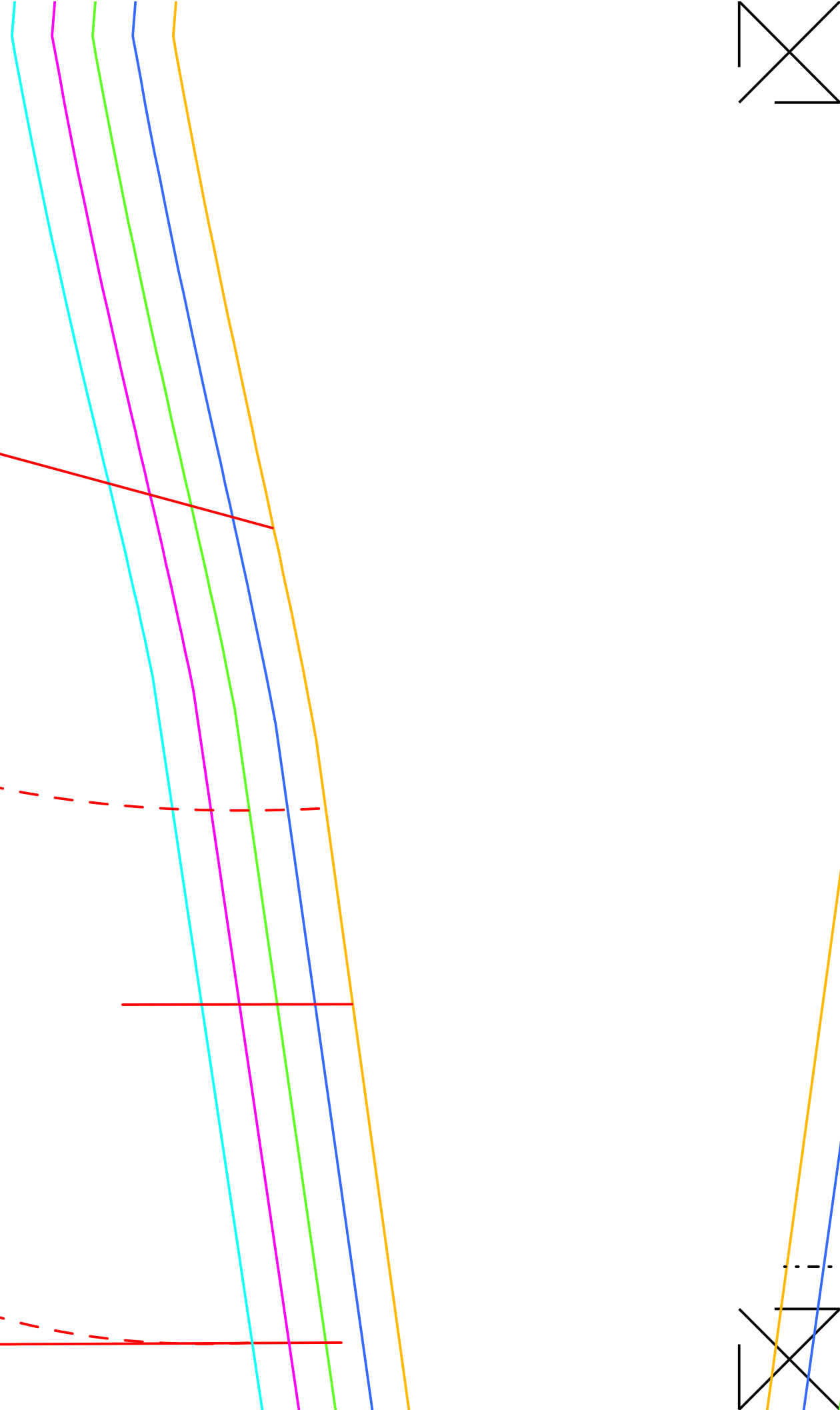
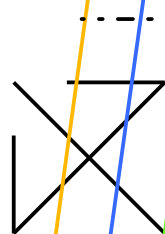
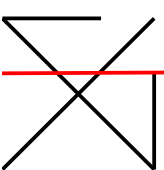
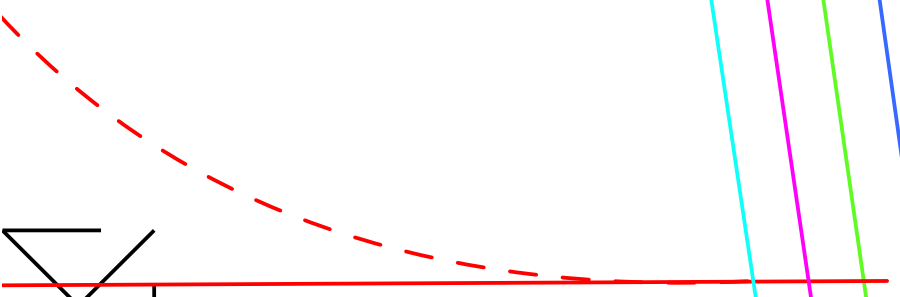
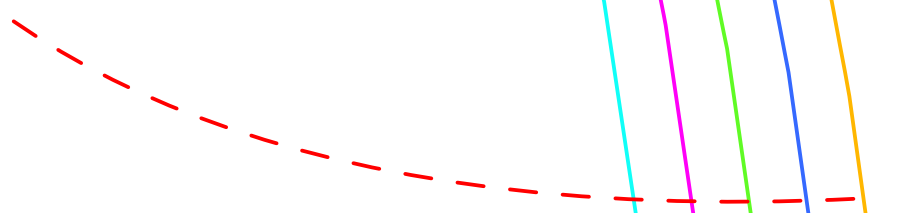
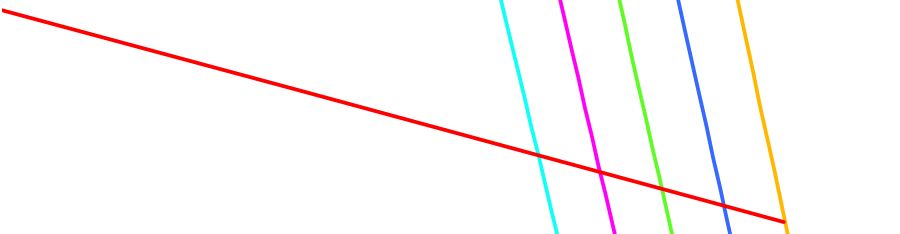
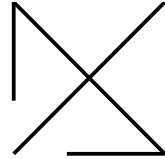
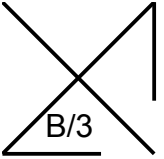
1cm seam allowance

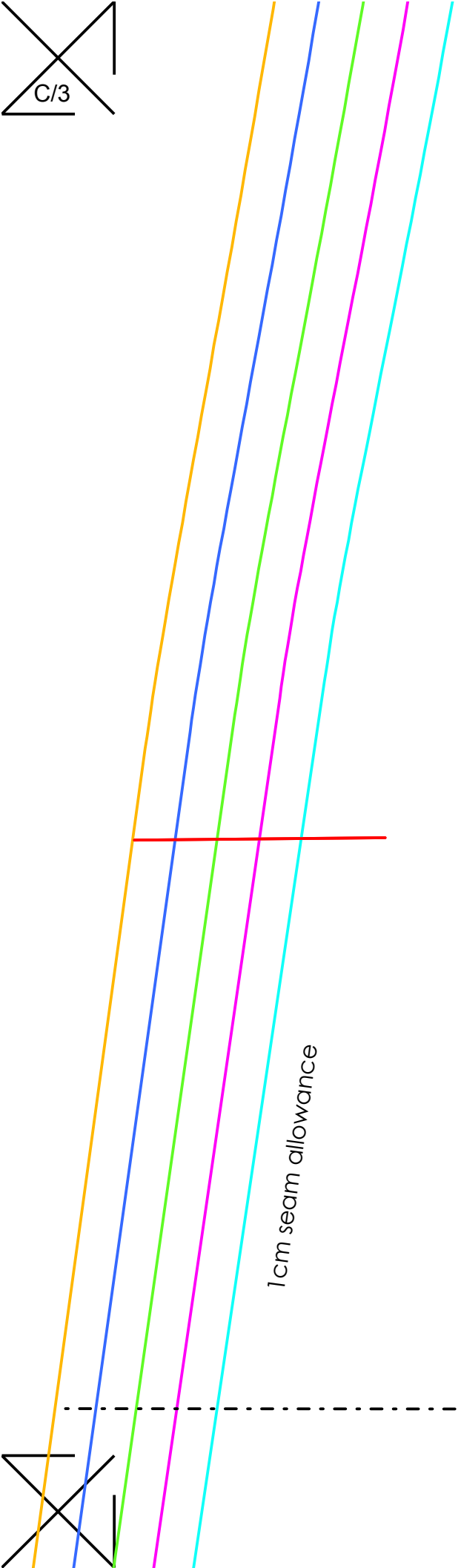
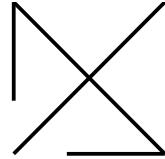
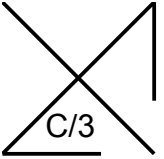




FOLD







MARY QUANT-STYLE MINIDRESS

DRESS BACK

cut x1 on fold

www.vam.ac.uk/articles/sew-your-own-mary-quant-style-minidress
This pattern is for personal non-commercial use only

created by *Alice & Co*
PATTERNS

colour key for UK sizes

size 6 - turquoise

size 8 - pink

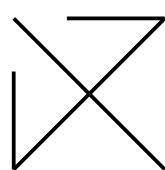
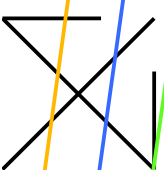
size 10 - lime

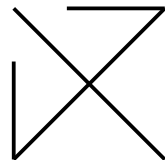
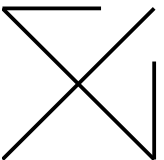
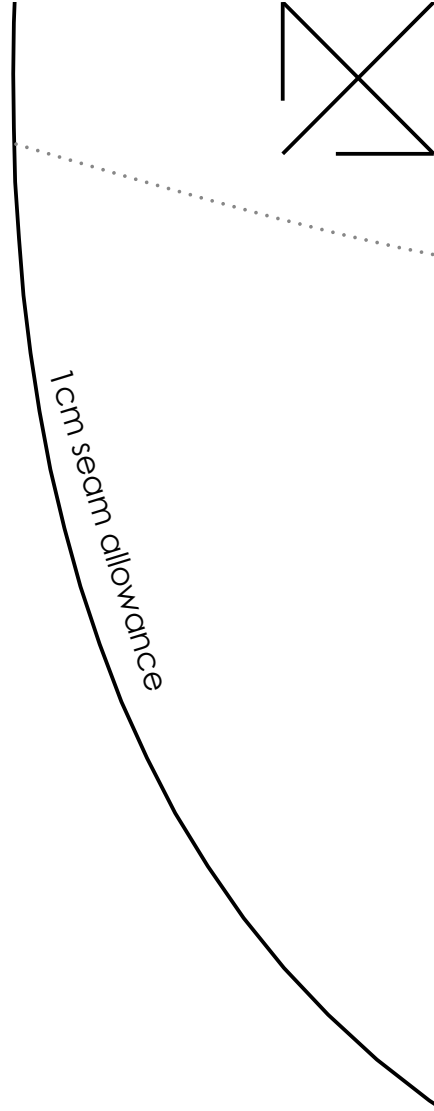
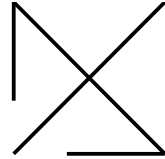
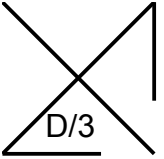
size 12 - blue

size 14 - orange

1cm seam allowance

lengthen or shorten here





E/3

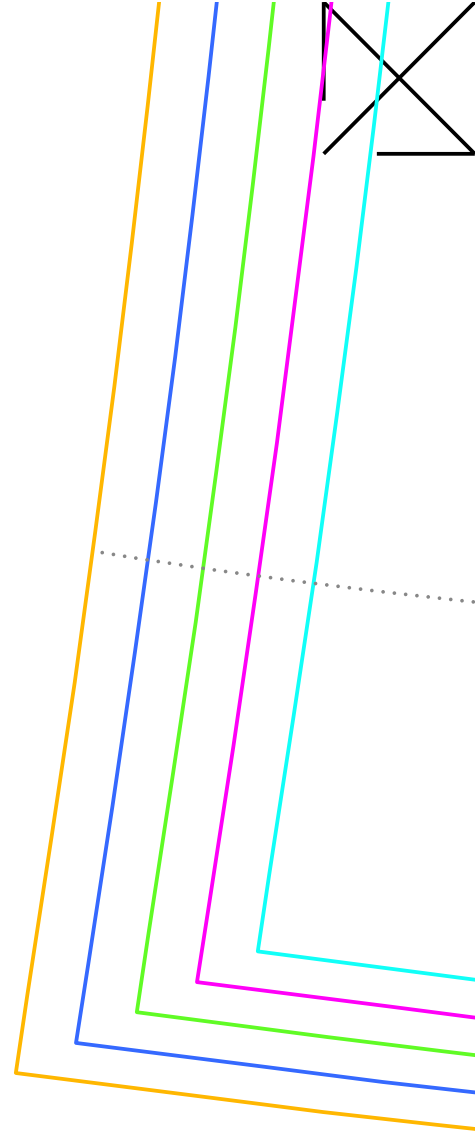
V&A

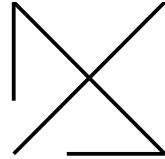
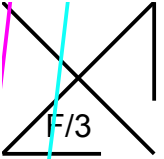
MARY QUANT-STYLE MINIDRESS

CURVED POCKET

cut x1 pair

www.vam.ac.uk/articles/sew-your-own-mary-quant-style-minidress
This pattern is for personal non-commercial use only

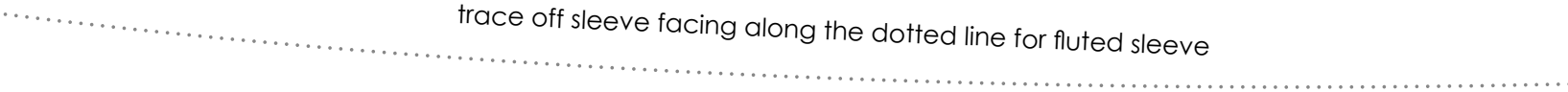




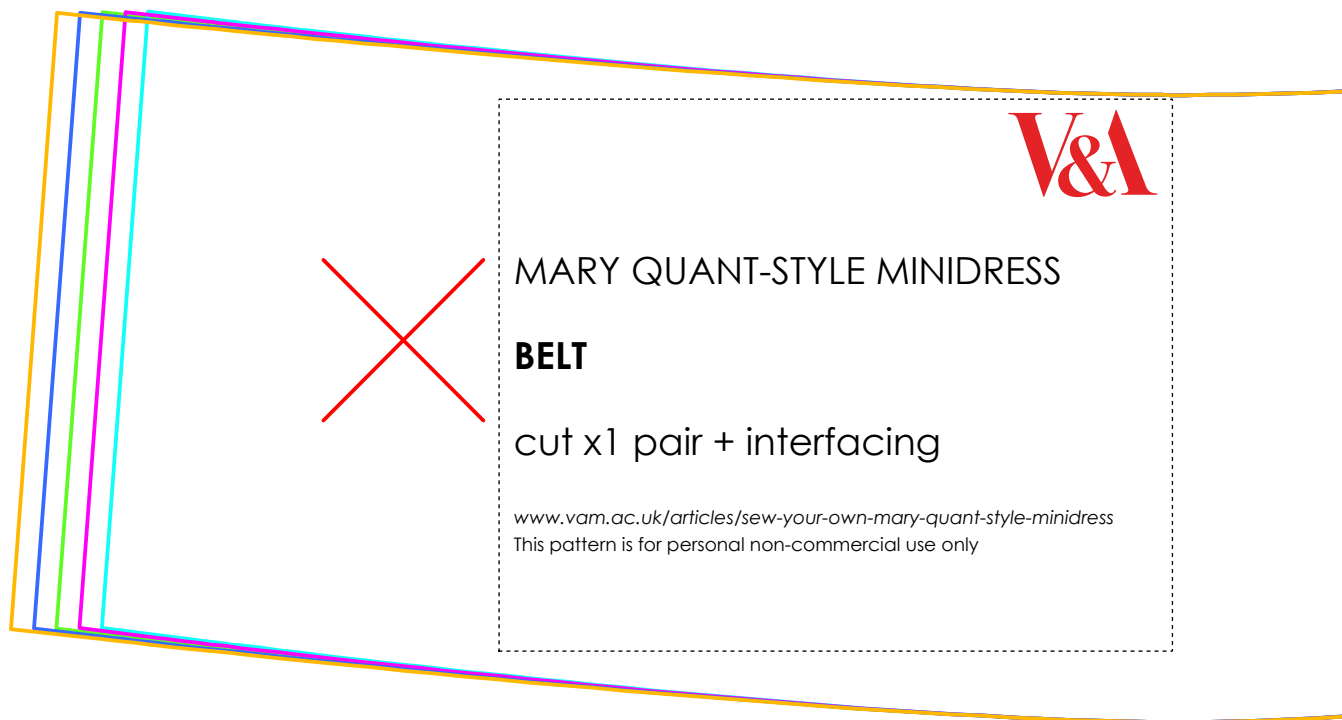
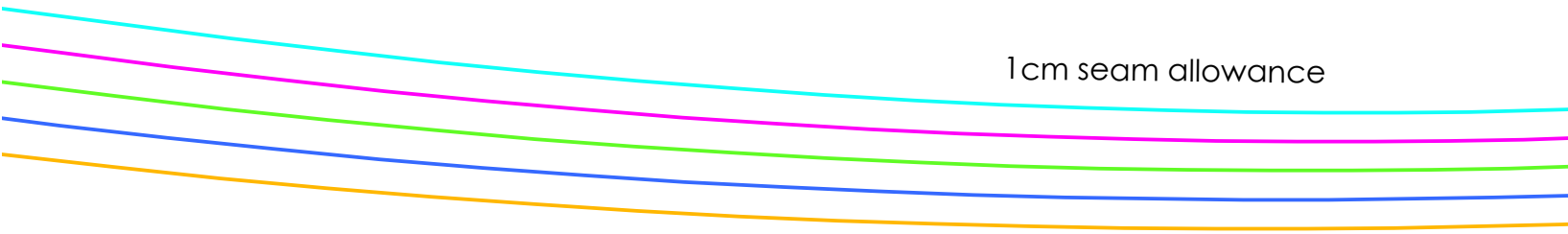
F/3



trace off sleeve facing along the dotted line for fluted sleeve



1 cm seam allowance



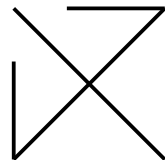
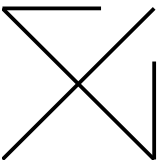
V&A

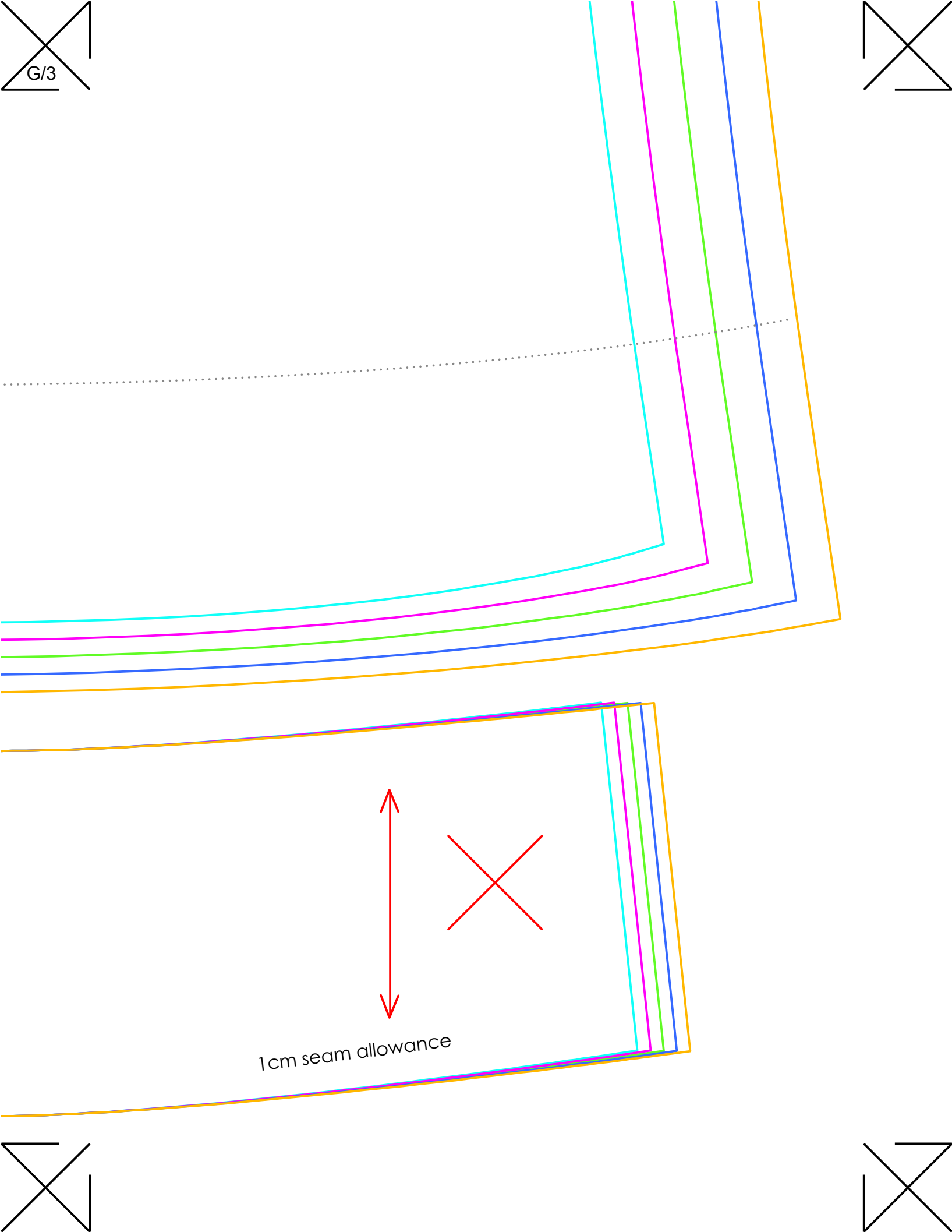
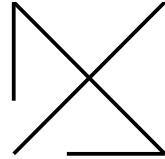
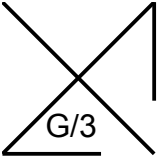
MARY QUANT-STYLE MINIDRESS

BELT

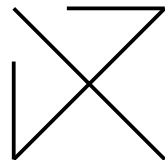
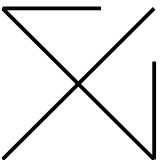
cut x1 pair + interfacing

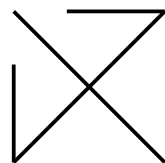
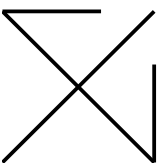
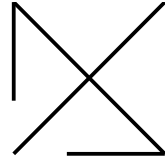
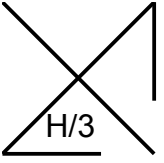
www.vam.ac.uk/articles/sew-your-own-mary-quant-style-minidress
This pattern is for personal non-commercial use only





1cm seam allowance





A/4

lengthen or shorten here



MARY QUANT-STYLE MINIDRESS

DRESS FRONT

cut x1 on fold

www.vam.ac.uk/articles/sew-your-own-mary-quant-style-minidress
This pattern is for personal non-commercial use only

created by *Alice & Co*
PATTERNS

colour key for UK sizes

size 6 - turquoise

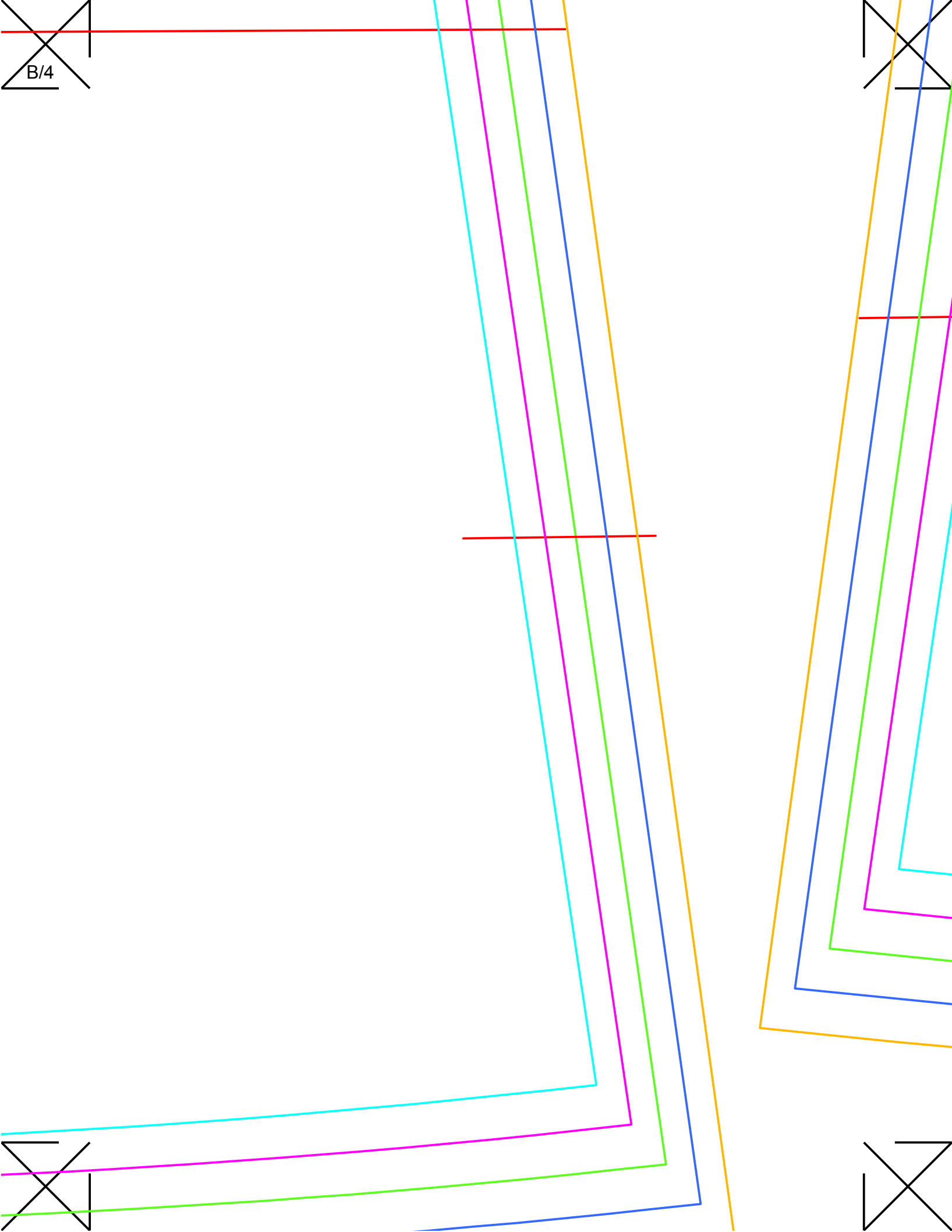
size 8 - pink

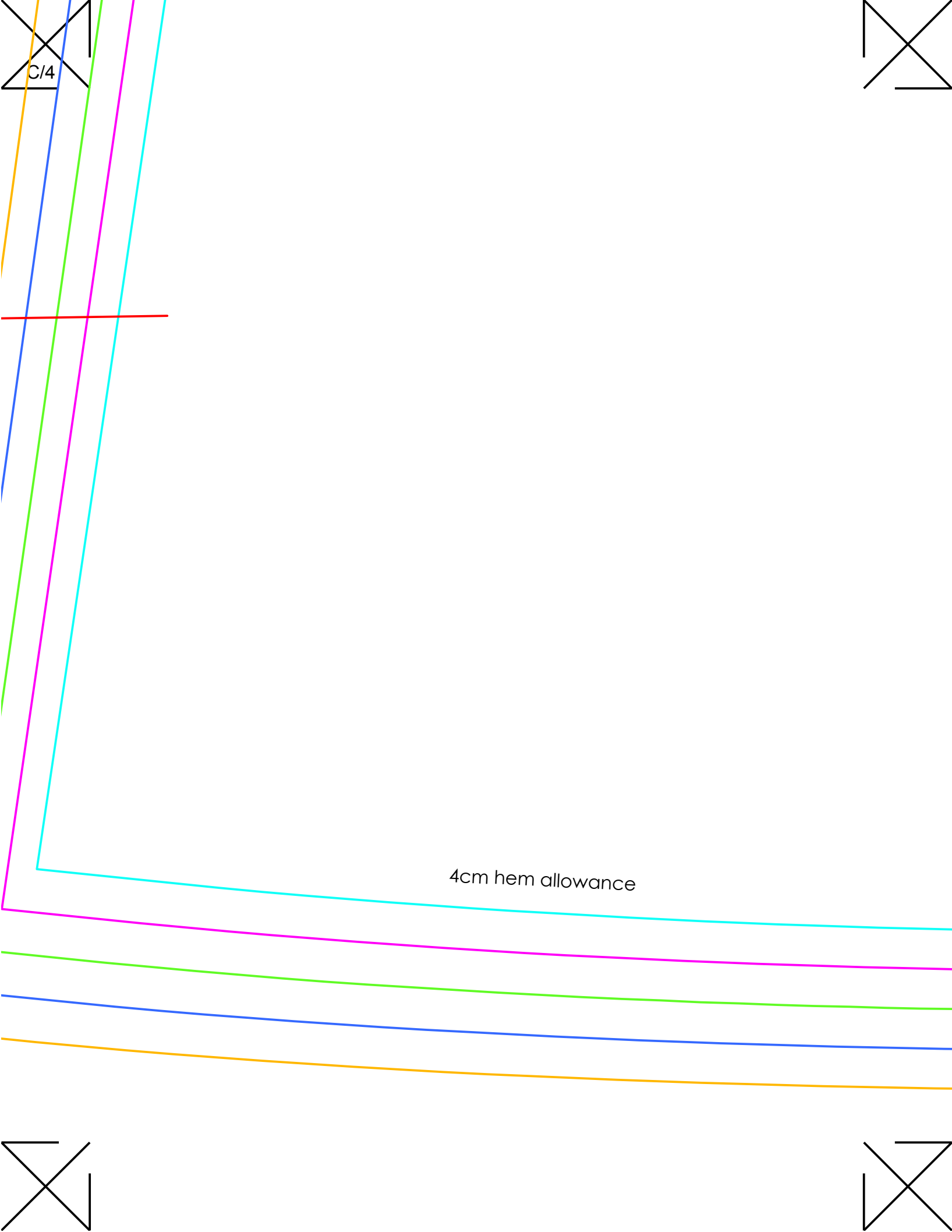
size 10 - lime

size 12 - blue

size 14 - orange

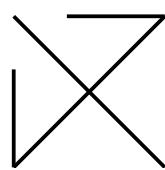
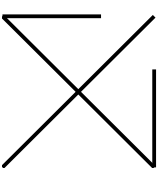
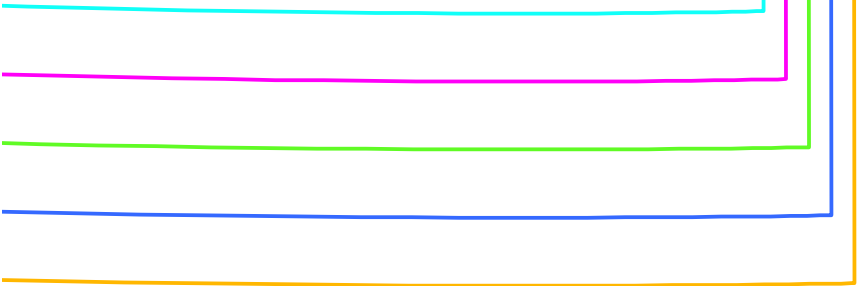
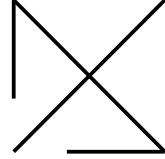
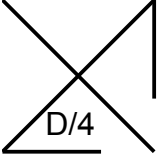
4cm hem allowance

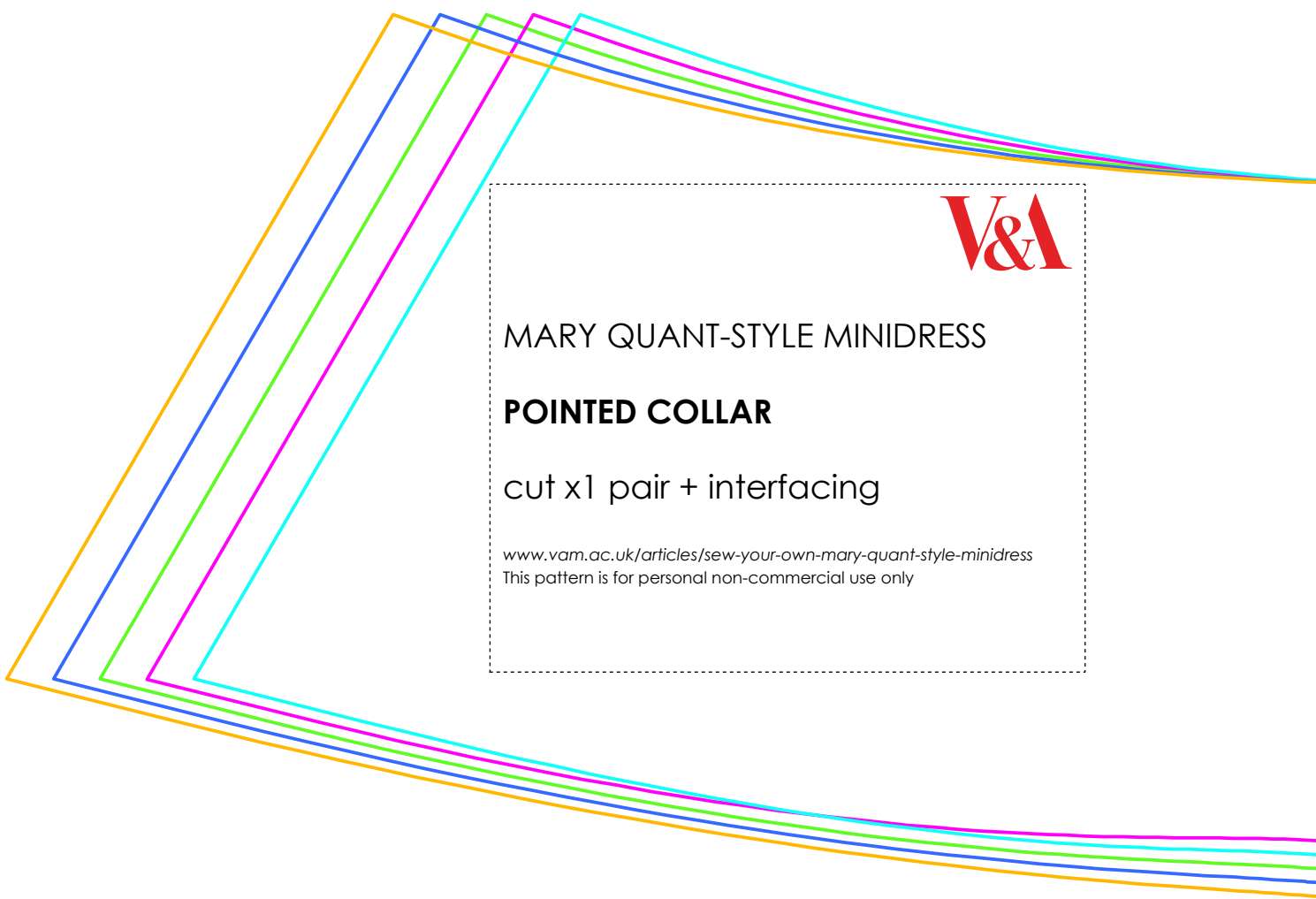




C/4

4cm hem allowance



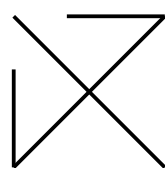
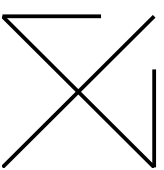
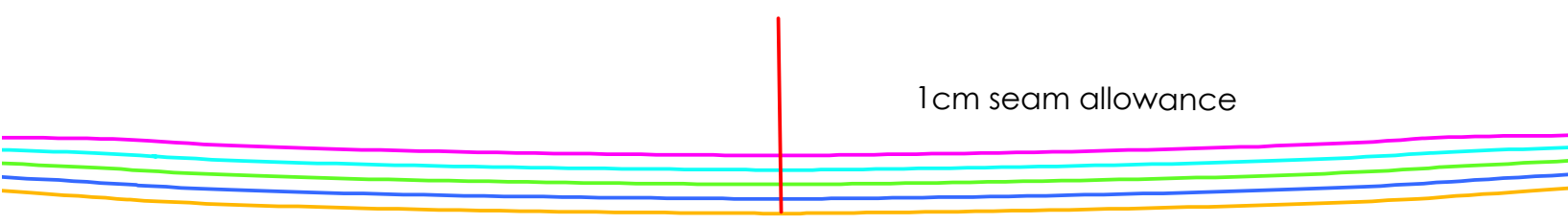
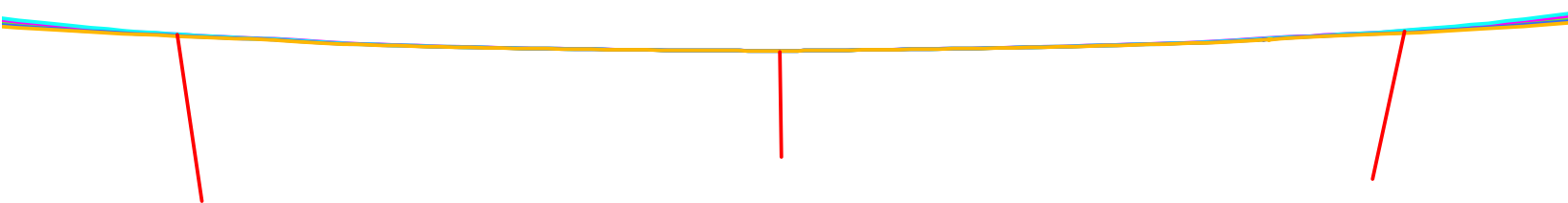
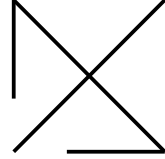
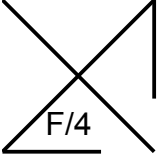


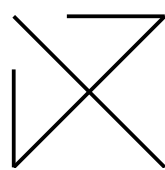
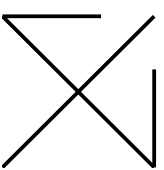
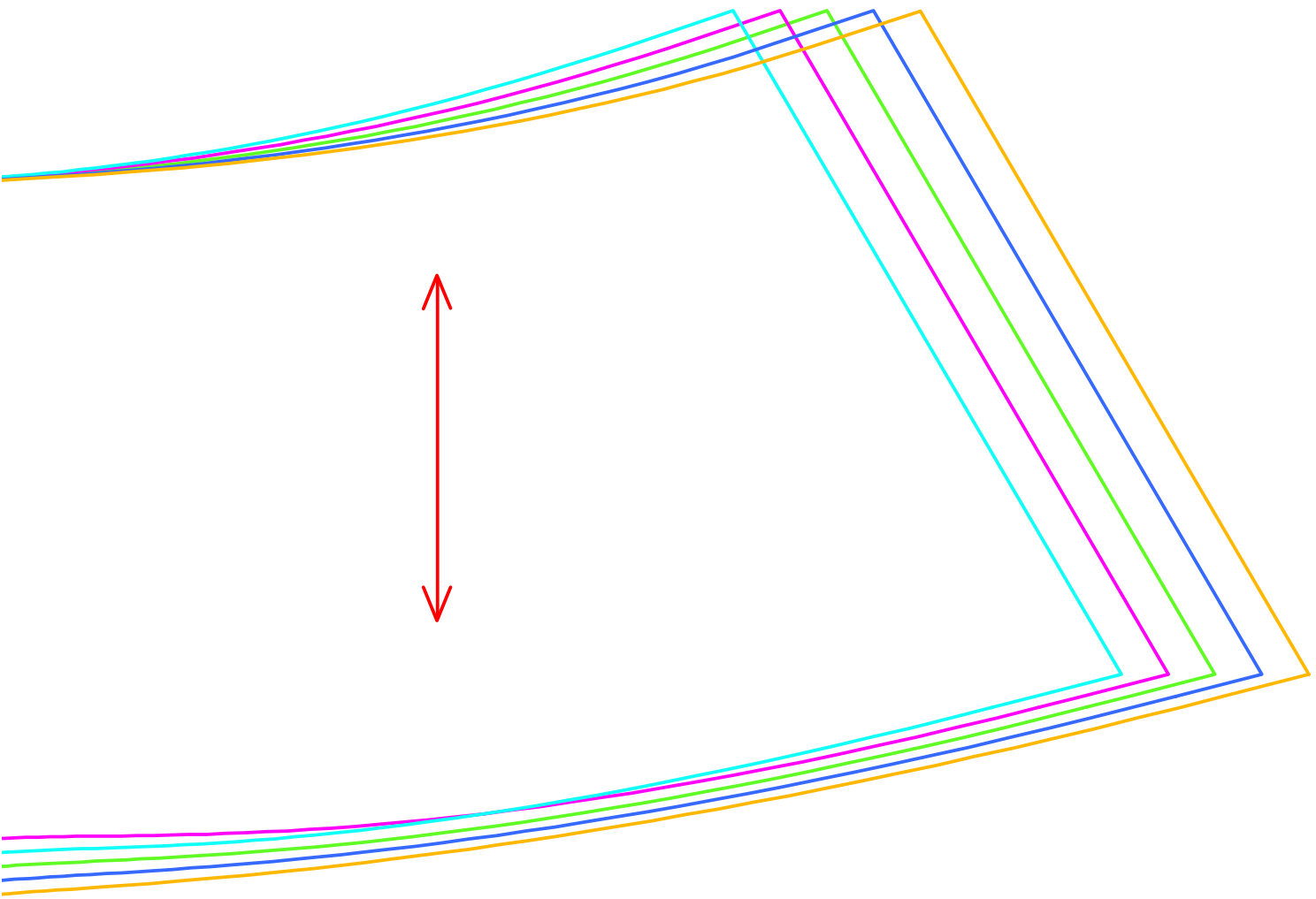
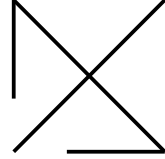
MARY QUANT-STYLE MINIDRESS

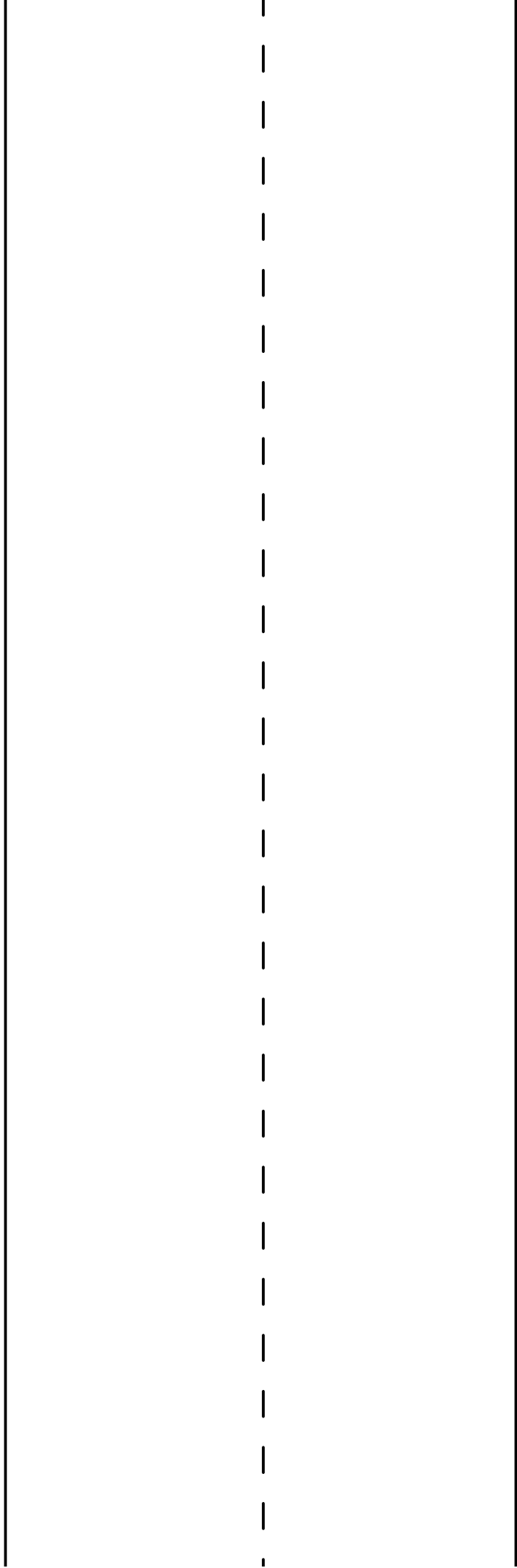
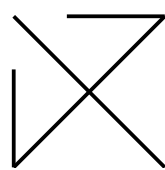
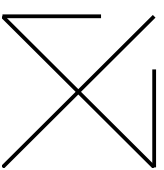
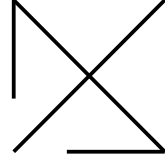
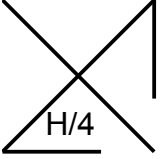
POINTED COLLAR

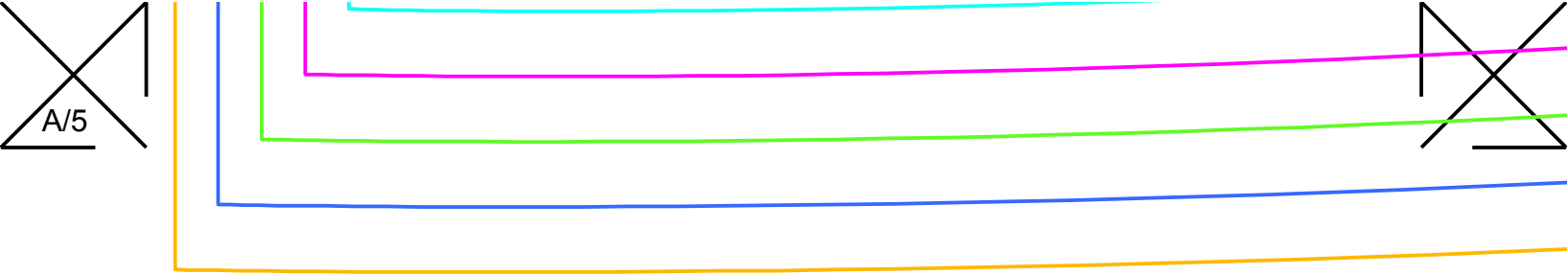
cut x1 pair + interfacing

www.vam.ac.uk/articles/sew-your-own-mary-quant-style-minidress
This pattern is for personal non-commercial use only









A/5



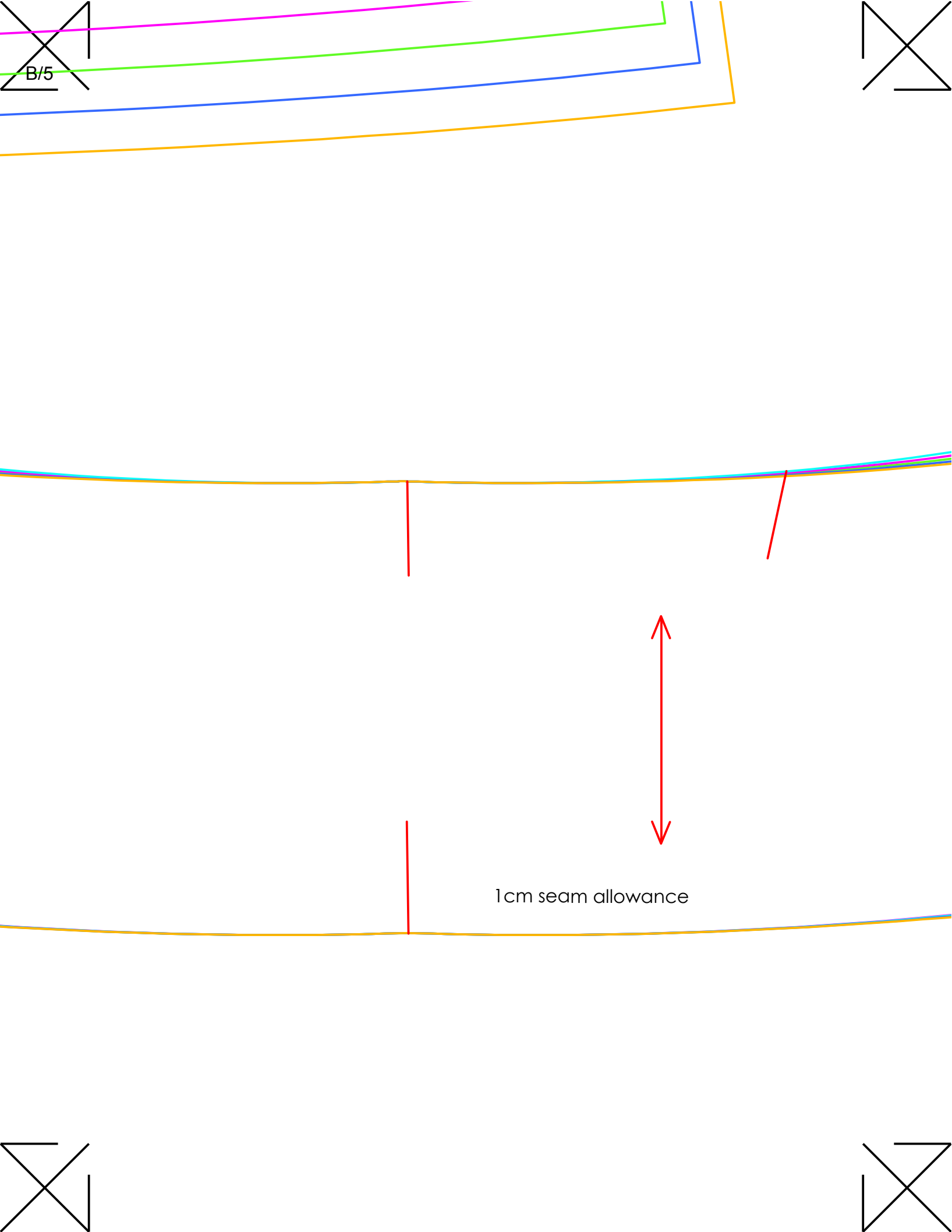
MARY QUANT-STYLE MINIDRESS

ROUNDED COLLAR

cut x1 pair + interfacing

www.vam.ac.uk/articles/sew-your-own-mary-quant-style-minidress
This pattern is for personal non-commercial use only





B/5

1cm seam allowance

